

# PARTS LIST

# DLR

**1502V**

**1501M**

**1501MF**

**1501HD**

**1502T**

**1502V-HD**

**1502L**

**1503V**

**1503V-HD**

1404  
1405 TOP  
4  
2

## Foreword

### Thank you for purchasing a Kansai Special DLR Series sewing machine.

Use this Parts List for easy identification and ordering of DLR-V (without puller) Series repair and replacement parts. You will find listings for reference numbers, parts numbers and quantities required. This Parts List is based on DLR-P as a standard machine.

For parts common to all the DLR-V series machines, see pages 1—14. For parts used only on subclass models (those marked with ★), refer to pages 15—24. Parts described by dotted line or marked with ※ are the same as those used in standard model (DLR-1502V).

By referring to the index on pages 28—30, you can easily find the drawings and names for any parts number.

When ordering, please specify the following.

(Example)

Model	Needle Gauge	Ref. No.	Parts No.	Q'ty
(DLR-1502V)	(1/8")	(P12, 1)	(14-510)	(1 pc.)

In the drawings, the parts shown in boxes indicate a set of parts.

When ordering, please specify the assembly number.

(Example)

Model	Ref. No.	Assembly No.	Q'ty
(DLR-1502V)	(P8, 56V-B)	(50-571)	(1 set)

A list covering all parts used on DLR-V series is provided on the last page of this Parts List for easy reference.

This Parts List is valid for machines manufactured after January, 1 1978. Due to frequent design improvements, components and parts numbers may be changed in the future.

## パーツリスト御利用に際して

### DLRシリーズ製品お買い上げいただきありがとうございました。

本パーツリストは、DLR-V（プラーなし）シリーズミシンの修理用部品が容易に御利用いただけるよう編集されております。

DLR-1502Vを基本機種として、機構別に収録され、部品図解頁の下側または反対側の頁に参照番号、部品番号、名称、使用数量の順に記載されております。1頁から14頁を参照して下さい。参照番号に★印の付いた部品は基本機種以外のサブクラス機種になると異なる部品です。15頁から24頁を参照して下さい。サブクラス機種で、部品図解が点線で描かれている部品、または参照番号に※印の付いている部品は基本機種(DLR-1502V)と共通部品です。

また28頁から30頁には部品索引表を記載しておりますので部品番号のみで、その図解、名称などが容易に引き出せます。

本パーツリストに基づき部品御注文の際は、部品番号を必ず明示して下さい。

(例) 機種名 針巾 参照番号 部品番号 数量  
(DLR-1502V) (1/8") (P12, 1) (14-510) (1個)

部品図解中で枠内の部品に関しては、アッセンブリー番号を御使用下さい。

(例) 機種名 参照番号 アッセンブリー番号 数量  
(DLR-1502V) (P8, 56V-B) (50-571) (1組)

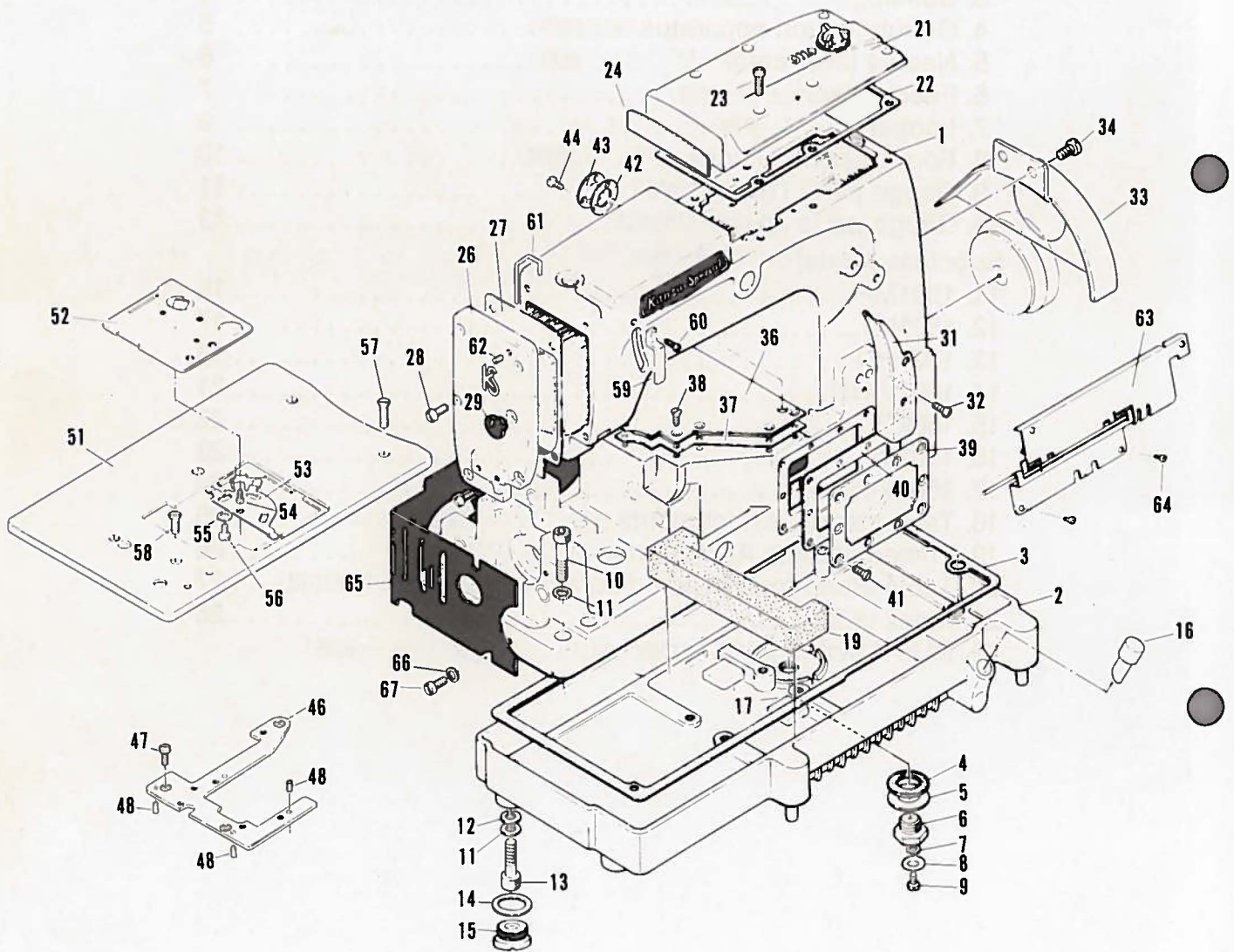
パーツブックの最終ページに、DLR-Vシリーズの一覧表を記載しておりますので御利用下さい。

本パーツリストは、1978年1月現在製造中のミシンを基に作成されております。部品番号、部品形状などは設計変更により変わる場合があります。

## Contents

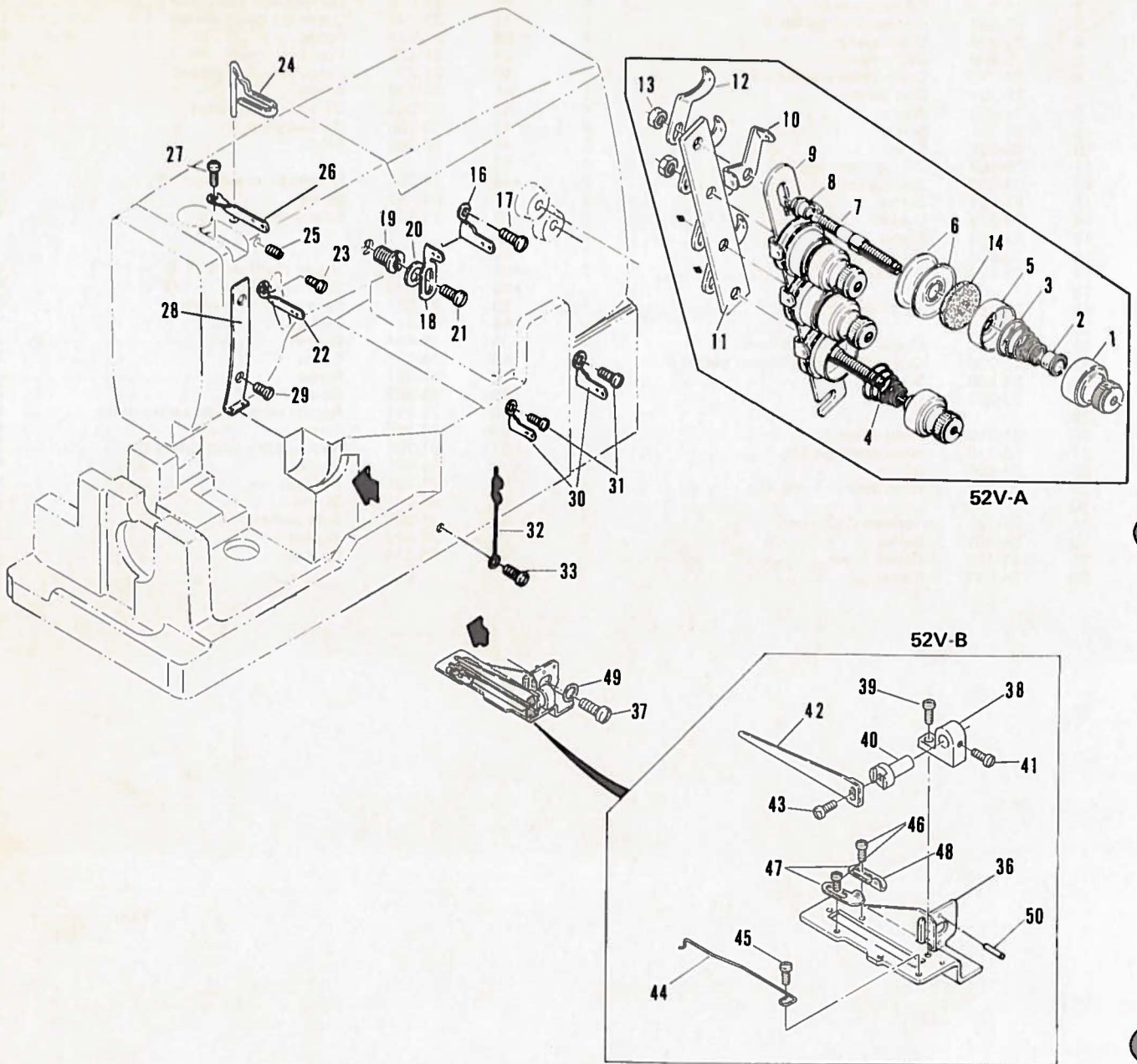
1. Housing components (カバー関係) . . . . .	1
2. Thread eyelet components (糸道関係) . . . . .	3
3. Bushings (ブッシュ関係) . . . . .	4
4. Oil lubrication apparatus (給油関係) . . . . .	5
5. Needle lever crank (弓・クランク機構) . . . . .	6
6. Feed rocker (送り台機構) . . . . .	7
7. Looper (ルーパー機構) . . . . .	9
8. Foot lifter mechanism (押え上げ機構) . . . . .	10
9. Gauge parts (1) (ゲージ関係(1)) . . . . .	11
10. Gauge parts (2) (ゲージ関係(2)) . . . . .	13
Subclass model (サブクラス機構)	
11. 1501MF . . . . .	15
12. 1501M . . . . .	17
13. 1501HD . . . . .	19
14. 1502V-HD . . . . .	21
15. 1502T . . . . .	22
16. 1503V . . . . .	23
17. 1503V-HD . . . . .	24
18. Tape stands, Attachments (テープ立て・アタッチメント) . . . . .	25
19. Thread stands, Accessories (糸立て・アクセサリ) . . . . .	26
20. Table stand installation diagram (テーブルスタンド据付図) . . . . .	27
21. Index (索引) . . . . .	28
22. DLR-V series parts index (DLR-Vシリーズパーツ一覧表)	

# 1. Housing components (カバー関係)



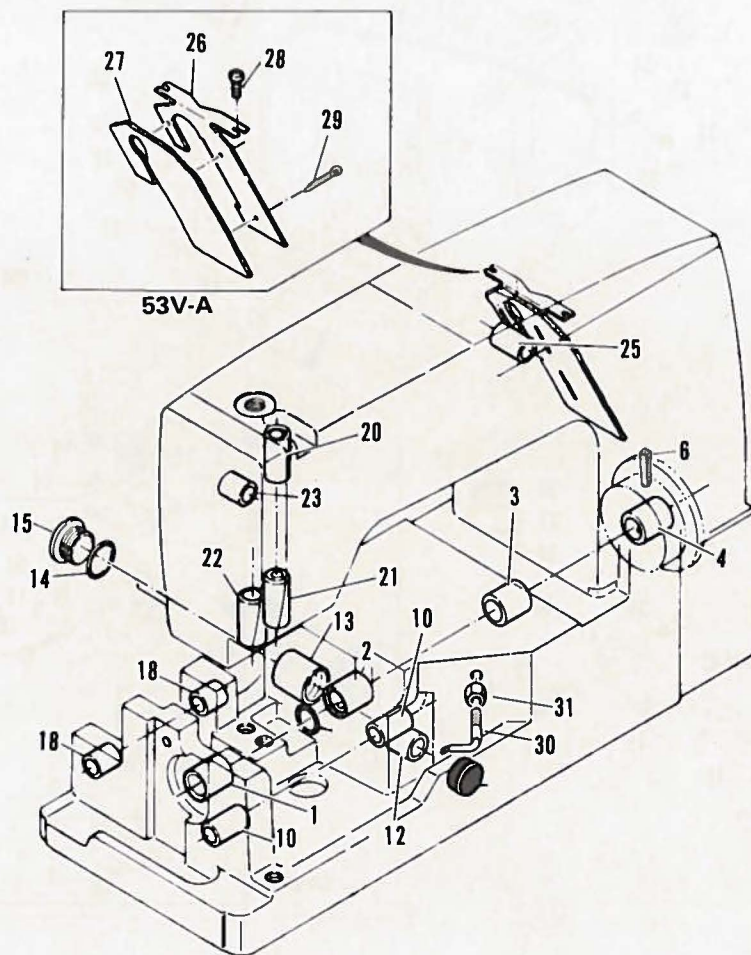
Ref. No.	Part No.	Part Name	Q'ty	Ref. No.	Part No.	Part Name	Q'ty
* 1	22-556	Arm bed standard	1	35			
2	31-203	Oil reservoir	1	36	21-513	Oil reservoir top cover	1
3	23-402	Oil reservoir gasket B	1	37	23-223	Upper oil cover gasket	1
4	23-299	Drain gasket	1	38	84-661	Screw	8
5	75-469	Drain washer	1	39	21-122	Front oil cover	1
6	87-810	Drain cover screw	1	40	23-232	Front oil cover gasket	1
7	23-301	Seal gasket C	1	41	84-664	Screw	10
8	75-453	Washer	1	42	23-263	Oil seal plate gasket	1
9	84-761	Screw	1	43	39-108	Oil seal plate B	1
10	85-628	Screw	2	44	84-362	Screw	3
11	75-452	Oil reservoir washer	4	45			
12	23-260	Seal gasket C	2	*46	14-051	Needle plate support CP	1
13	85-627	Screw	2	47	84-761	Screw	3
14	23-302	Gasket	2	48	71-251	Knock pin	4
15	87-756	Screw	2	49			
16	39-213	Oil gauge	1	50			
17	39-163	Oil filter	2	*51	21-552	Upper cloth plate (1/8" - 1/2")	1
18				*52	21-522	Slide plate (1/8" - 1/2")	1
19	39-161	Oil filter	1	53	21-531	Spring for slide plate	1
20				54	85-611	Screw	1
21	21-208	Crank chamber oil cover F	1	55	75-454	Washer	3
22	23-206	Crank chamber oil cover gasket F	1	56	84-585	Screw	3
23	84-566	Screw	6	57	84-861	Screw	3
24	23-207	Packing	1	58	84-862	Screw	2
25				59	21-711	Needle lever eyelet safety plate	1
26	21-316	Head cover A	1	60	84-363	Screw	1
27	23-216	Head cover gasket	1	61	21-701	Needle bar eyelet safety bar	1
28	84-566	Screw	6	62	84-521	Screw	1
29	23-161	Head cover oil seal cap	1	63	21-161	Front cover	1
30				64	84-571	Screw	2
31	21-131	Tension disc cover	1	65	21-306	Side plate cover	1
32	84-361	Screw	2	66	75-467	Washer	3
33	21-402	Pulley cover	1	67	84-574	Screw	3
34	84-571	Screw	2				

## 2. Thread eyelet components (糸道関係)



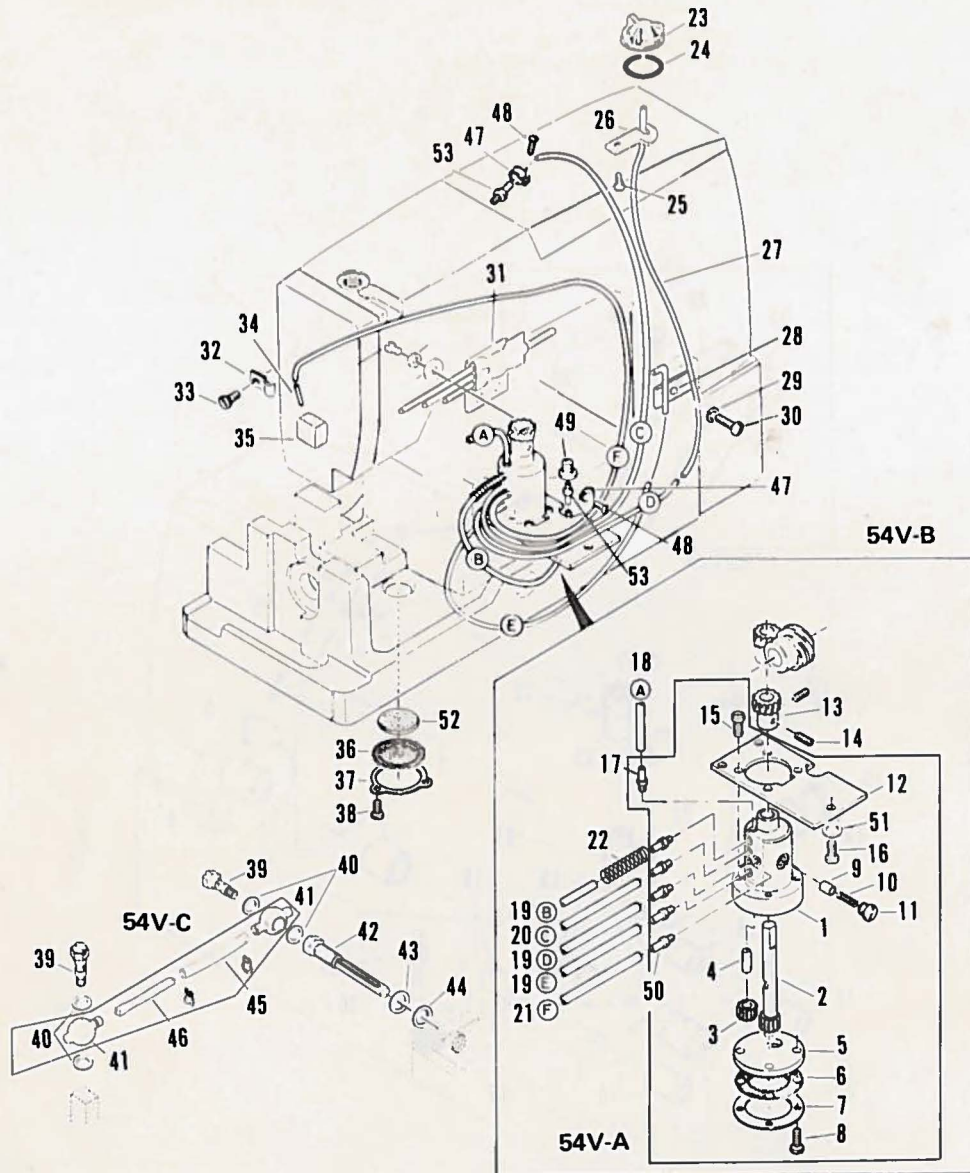
Ref. No.	Part No.	Part Name	Q'ty	Ref. No.	Part No.	Part Name	Q'ty
1	41-101	Tension regulating nut	4	*26	45-131	Needle bar thread eyelet 2	1
2	41-105	Tension disc ratchet	4	27	84-361	Screw	1
3	41-701	Needle thread tension spring	2	*28	45-151	Needle thread guide A	1
4	41-702	Looper thread tension spring	2	29	84-464	Screw	2
5	41-107	Tension disc cover	4	*30	47-101	Looper thread eyelet 2	2
6	41-111	Tension disc	8	31	84-361	Screw	2
7	41-172	Tension post	4	*32	47-202	Looper thread guide eyelet B	1
8	41-131	Tension post collar A	4	33	84-374	Screw	1
9	41-113	Tension post support	1	34			
10	41-115	Tension post thread eyelet	4	35			
*11	41-121	Tension post holder	1	36	43-331	Cast-off support plate C	1
12	41-117	Lead in thread eyelet	4	37	84-571	Screw	2
13	86-411	Nut	2	38	43-339	Retainer support bracket	1
14	23-324	Felt	4	39	84-162	Screw	1
15				40	43-112	Pin for looper thread retainer	1
*16	47-101	Thread eyelet 2	1	41	84-161	Screw	1
17	84-361	Screw	1	42	43-333	Looper thread retainer	1
*18	45-101	Needle thread eyelet 2	1	43	84-374	Screw	1
19	85-531	Screw	1	44	43-335	Looper thread cast-off pin	1
20	75-456	Washer	1	45	84-163	Screw	1
21	84-571	Screw	1	46	84-163	Screw	2
*22	45-121	Needle lever thread eyelet 2	1	*47	47-131	Looper thread guide eyelet (right)	1
23	84-361	Screw	1	*48	47-132	Looper thread guide eyelet (left)	1
24	45-225	Needle thread take-up wire E	1	49	75-456	Washer	1
25	84-521	Screw	1	50	71-191	Pin	2
*52V-A	40-122	Thread tension ass'y					
*52V-B	40-352	Cast-off support B ass'y					

### 3. Bushings (ブッシュ関係)



Ref. No.	Part No.	Part Name	Q'ty	Ref. No.	Part No.	Part Name	Q'ty
1	81-711	Main shaft bushing A . . . . .	1	18	81-751	Feed rocker shaft bushing . . . . .	2
2	81-702	Main shaft bushing B . . . . .	1	19			
3	81-713	Main shaft bushing C . . . . .	1	20	81-183	Needle bar bushing (upper) . . . . .	1
4	81-110	Flange bushing . . . . .	1	21	81-184	Needle bar bushing (lower) . . . . .	1
5	23-197	O-ring . . . . .	1	22	81-153	Presser bar bushing . . . . .	1
6	23-383	Felt . . . . .	1	23	81-201	Bushing for spring set screw . . . . .	1
7				24			
8				25	81-255	Presser foot lifter lever bushing . . . . .	1
9				26	39-122	Oil fence . . . . .	1
10	81-736	Looper rocker shaft bushing . . . . .	2	27	23-372	Felt . . . . .	1
11	23-166	Oil plug . . . . .	1	28	84-161	Screw . . . . .	2
12	81-136	Looper drive lever shaft bushing B . . . . .	1	29	93-621	Pin . . . . .	3
13	81-137	Looper drive lever shaft bushing C . . . . .	1	30	35-111	Feed rocker eccentric link tubing . . . . .	1
14	23-195	O-ring . . . . .	1	31	86-501	Nut . . . . .	1
15	87-811	Screw . . . . .	1	39			
16				40			
17							
53V-A	30-941	Oil fence ass'y					

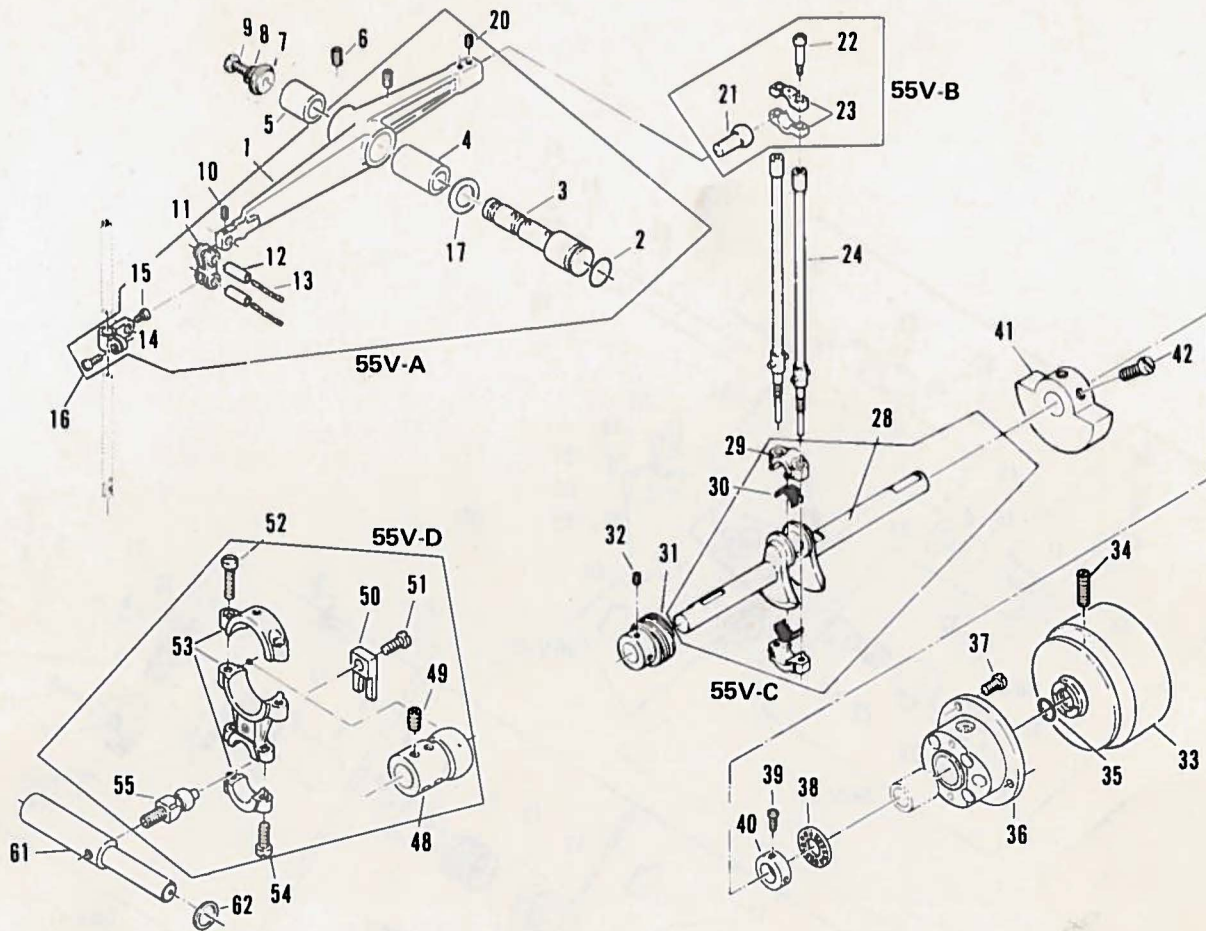
# 4. Oil lubrication apparatus (給油関係)



Ref. No.	Part No.	Part Name	Q'ty	Ref. No.	Part No.	Part Name	Q'ty
1	31-401	Oil pump body C	1	28	23-291	Packing	3
2	31-406	Gear E (main)	1	29	75-468	Washer	3
3	31-407	Gear E (support)	1	30	84-363	Screw	3
4	71-482	Pin	1	31	35-121	Pipe	1
5	31-403	Pump body cover	1	32	39-133	Support	1
6	31-404	Pump body mesh	1	33	84-361	Screw	1
7	31-405	Mesh Frame	1	34	35-257	Pipe	1
8	84-571	Screw	4	35	23-368	Felt	1
9	31-305	Pin	1	36	31-310	Mesh	1
10	31-306	Spring	1	37	39-102	Mounting plate	1
11	31-307	Screw	1	38	84-362	Screw	3
12	31-402	Body fixing plate	1	39	35-203	Oil guide screw	2
13	31-409	Gear	1	40	23-306	Packing	4
14	84-521	Screw	2	41	35-305	Tube coupling	2
15	34-566	Screw	4	42	35-201	Oil flow screw	1
16	84-572	Screw	3	43	75-470	Washer	1
17	31-314	Vinyl tube coupling	5	44	23-300	Packing	1
18	35-302	Vinyl pipe (75ℓ)	1	45	35-207	Vinyl pipe	1
19	35-303	Vinyl pipe (230ℓ)	3	46	23-393	Felt	1
20	35-304	Vinyl pipe (410ℓ)	1	47	31-341	Pipe support	2
21	35-322	Vinyl pipe (600ℓ)	1	48	31-341	Screw	2
22	79-236	Spring	1	49	85-531	Fixing screw	1
23	39-233	Oil pot lid	1	50	31-364	Vinyl tube coupling	1
24	39-233	O-ring	1	51	75-467	Washer	3
25	84-161	Screw	1	52	39-162	Mesh filter	1
26	39-137	Pipe support	1	53	31-314	Vinyl tube coupling	2
27	35-246	Pipe	1				
54V-A	30-001	Oil pump ass'y					
54V-B	30-002	Oil pump ass'y					
54V-C	30-500	Feeder holder piping ass'y					

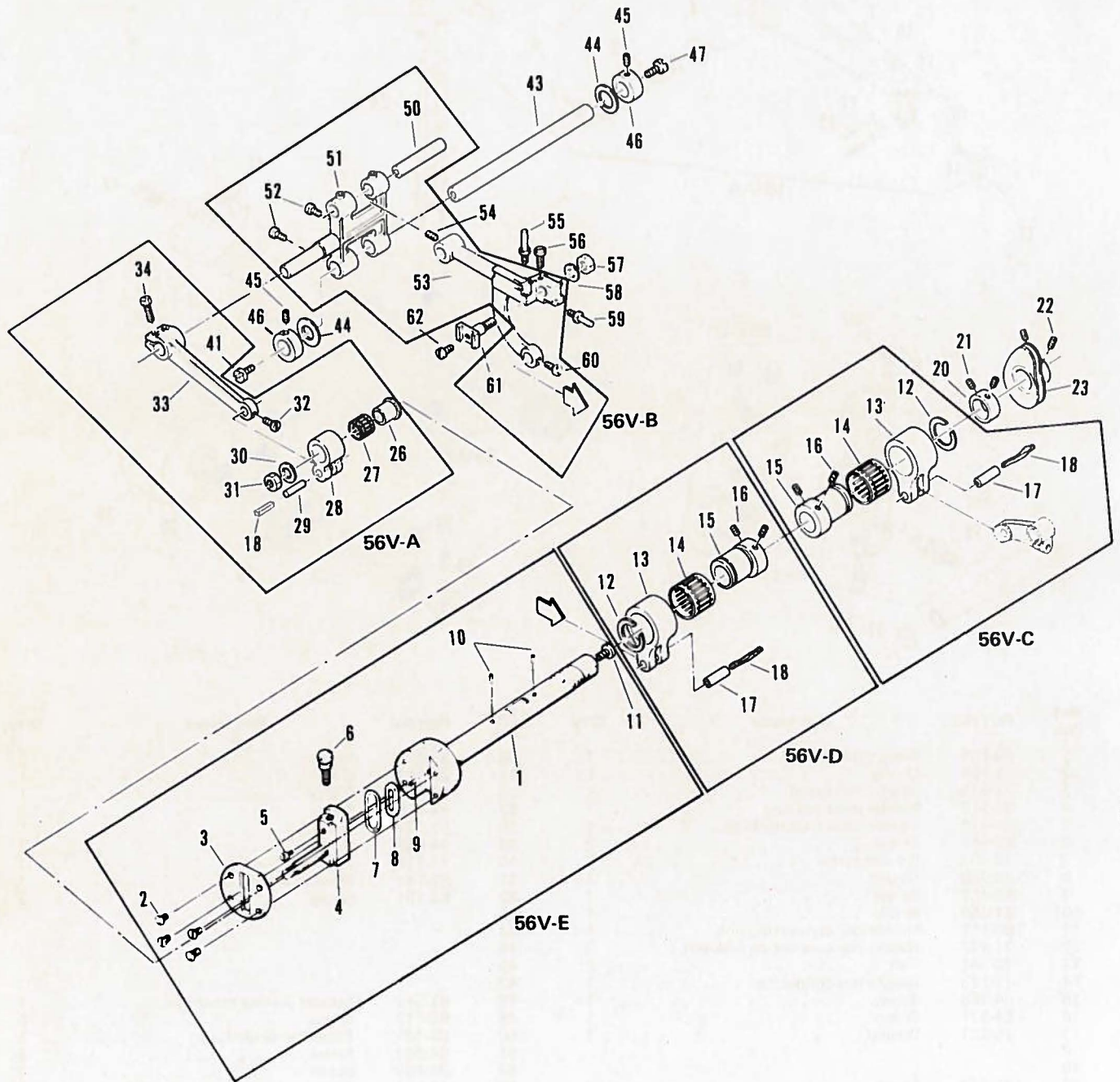


# 5. Needle lever crank (ミ・クランク機構)



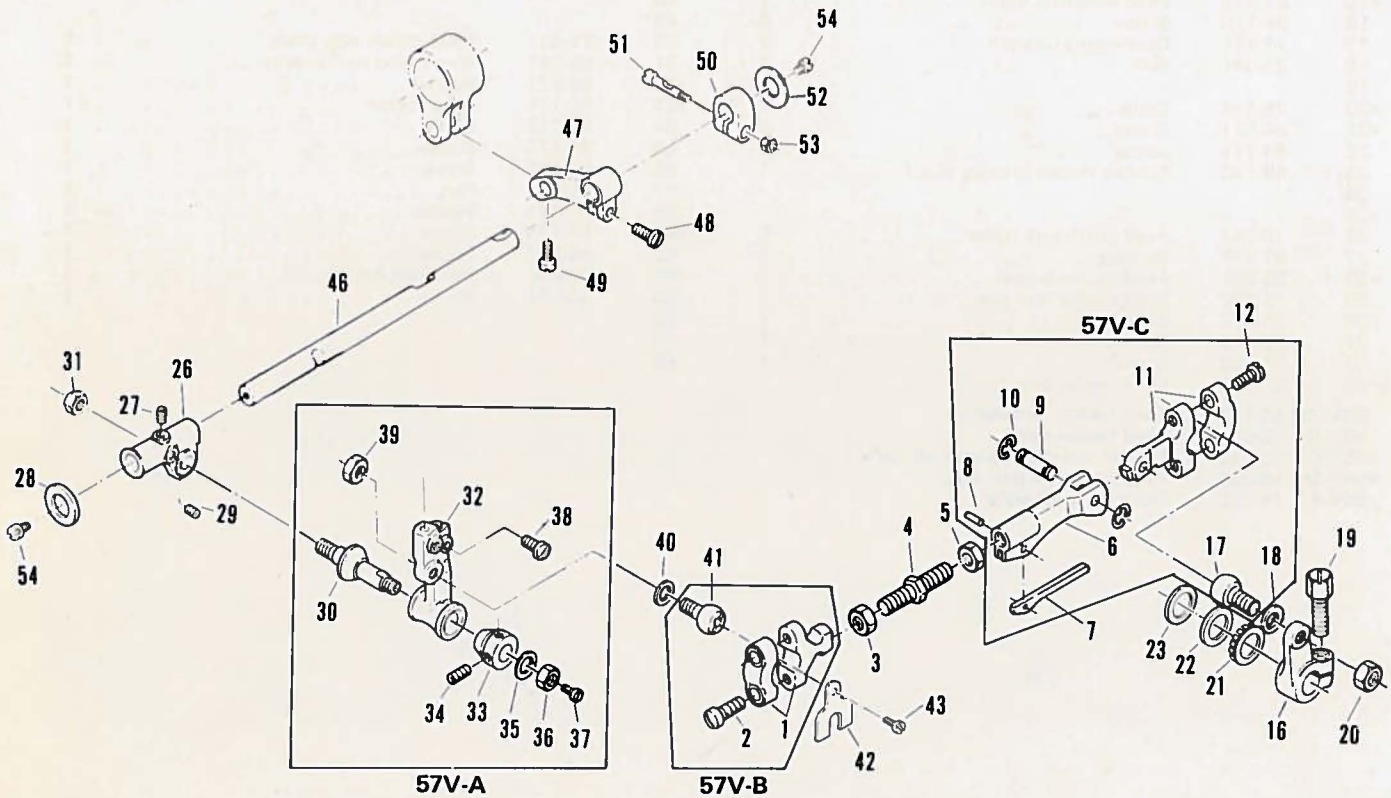
Ref. No.	Part No.	Part Name	Q'ty	Ref. No.	Part No.	Part Name	Q'ty
1	69-105	Needle lever E . . . . .	1	34	85-114	Screw . . . . .	2
2	23-195	O-ring . . . . .	1	35	23-197	O-ring . . . . .	1
3	71-933	Needle lever stud . . . . .	1	36	69-305	Flange . . . . .	1
4	81-113	Needle lever bushing . . . . .	1	37	84-566	Screw . . . . .	3
5	81-412	Needle lever stud bushing . . . . .	1	38	92-231	Bearing . . . . .	1
6	85-114	Screw . . . . .	2	39	84-563	Screw . . . . .	2
7	39-107	Oil seal screw . . . . .	1	40	75-113	Crank shaft collar . . . . .	1
8	23-260	Gasket . . . . .	1	41	69-141	Balance wheel . . . . .	1
9	85-182	Screw . . . . .	1	42	84-761	Screw . . . . .	2
10	84-366	Screw . . . . .	1	43			
11	66-111	Needle bar connecting link . . . . .	1	44			
12	71-432	Needle bar connection link pin . . . . .	2	45			
13	23-341	Felt . . . . .	2	46			
14	73-113	Needle bar connection . . . . .	1	47			
15	84-366	Screw . . . . .	1	48	61-512	Looper driving eccentric . . . . .	1
16	84-571	Screw . . . . .	1	49	85-113	Screw . . . . .	6
17	75-331	Washer . . . . .	1	50	69-121	Eccentric guide fork . . . . .	1
18				51	84-591	Screw . . . . .	1
19				52	84-568	Screw . . . . .	2
20	85-212	Screw . . . . .	2	53	63-511	Looper driving lever ball joint . . . . .	1
21	61-722	Needle lever connecting rod . . . . .	1	54	84-567	Screw . . . . .	2
22	84-586	Screw . . . . .	2	55	61-713	Looper driving connecting rod . . . . .	1
23	63-721	Ball joint for connecting rod . . . . .	1	56			
24	65-311	Connecting bar . . . . .	2	57			
25				58			
26				59			
27				60			
28				61	71-612	Looper driving shaft . . . . .	1
29	71-857	Crank shaft 5L . . . . .	1	62	75-332	Washer . . . . .	1
30	63-331	Ball-joint for crank shaft . . . . .	1	63			
31	91-011	Needle roller for crank shaft . . . . .	28	64			
32	31-410	Worm gear . . . . .	1	65			
33	84-718	Screw . . . . .	2				
34	69-208	Pulley . . . . .	1				
55V-A	60-971	Needle lever ass'y					
55V-B	60-340	Needle lever connecting rod ass'y					
55V-C	70-045	Crank shaft ass'y					
55V-D	60-355	Looper driving ball joint ass'y					

# 6. Feed rocker (送り台機構)



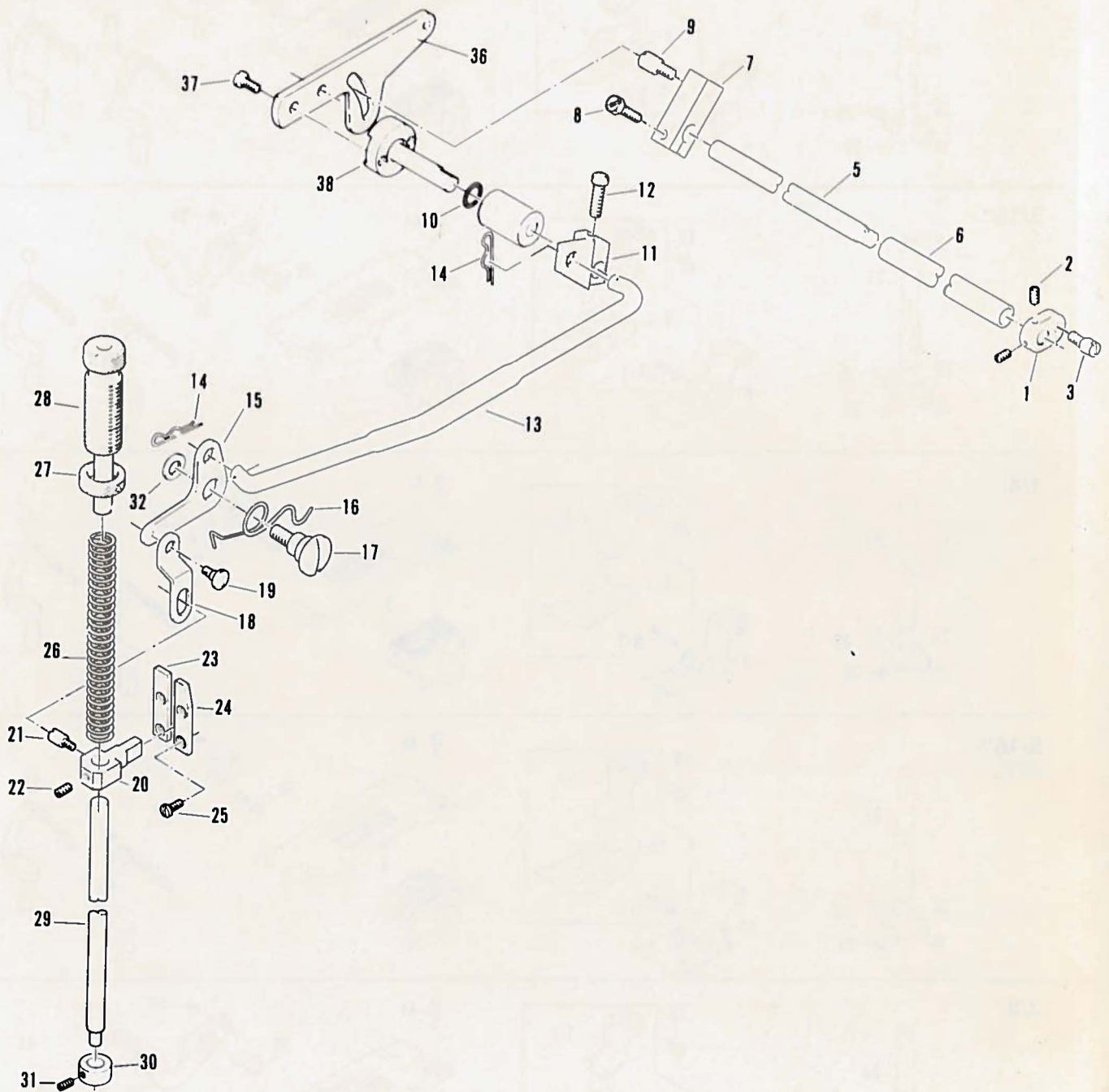
Ref. No.	Part No.	Part Name	Q'ty	Ref. No.	Part No.	Part Name	Q'ty
1	71-753	Main shaft 5C	1	34	84-612	Screw	2
2	84-661	Screw	4	35			
3	51-031	Head plate	1	36			
4	51-013	Feed crank adjusting post	1	37			
5	85-624	Screw	1	38			
6	84-383	Screw	1	39			
7	23-197	O-ring	1	40			
8	51-036	Oil guide	1	41	84-576	Screw	1
9	23-393	Felt	1	42			
10	23-391	Felt	3	43	71-642	Feed rocker shaft small	1
11	84-576	Screw	1	44	75-372	Washer	2
12	93-406	Snap ring	2	45	84-761	Screw	2
13	63-232	Feed eccentric link	2	46	75-132	Collar	2
14	91-406	Bearing	2	47	84-574	Screw	1
*15	61-312	Feed eccentric 0.8	2	48			
16	84-715	Screw	4	49			
17	71-431	Connecting link pin	2	50	71-531	Feed rocker arm shaft	1
18	23-341	Felt	2	51	55-041	Single feed rocker arm	1
19				52	84-571	Screw	2
*20	75-114	Collar	1	*53	55-174	Feed rocker	1
*21	84-511	Screw	2	54	84-712	Screw	1
22	84-711	Screw	2	55	84-177	Screw	1
23	49-133	Looper thread take-up disc C	1	56	84-463	Screw	1
24				57	86-501	Nut	1
25				58	75-381	Washer	1
26	75-243	Feed crank link roller	1	*59	84-176	Screw	1
27	91-271	Bearing	1	60	84-366	Screw	1
*28	63-351	Feed rocker link A	1	*61	55-051	Feed dog holder	1
29	71-432	Feed rocker link pin	1	62	84-588	Screw	1
30	75-453	Washer	1	63			
31	86-412	Nut	1	64			
32	84-366	Screw	1	65			
33	67-311	Feed rocker arm	1				
56V-A	60-711	Feed rocker arm ass'y					
56V-B	50-571	Feed rocker ass'y					
*56V-C	60-780	Looper avoid eccentric link ass'y					
*56V-D	60-080	Feed eccentric link ass'y					
56V-E	70-153	Main shaft 5C ass'y					

# 7. Looper (ルーパー機構)



Ref. No.	Part No.	Part Name	Q'ty	Ref. No.	Part No.	Part Name	Q'ty
1	63-812	Looper rocker connecting ball joint (left)	1	29	84-716	Screw	1
2	84-572	Screw	2	30	71-901	Looper rocker tapered pin	1
3	86-412	Nut	1	31	86-502	Nut	1
4	65-401	Connecting bar	1	*32	19-314	Looper holder	1
5	86-411	Nut	1	33	81-401	Tapered pin bushing	1
6	65-902	Looper driving connecting link	1	34	84-521	Screw	2
7	79-601	Plate spring	1	35	75-452	Washer	1
8	71-201	Pin	1	36	86-501	Nut	1
9	71-322	Shaft	1	37	84-361	Screw	1
10	93-201	Snap ring	2	38	84-616	Screw	2
11	63-821	Looper driving connecting ball joint	1	39	86-411	Nut	1
12	84-572	Screw	2	40	75-453	Washer	1
13				41	61-823	Looper driving connecting rod	2
14				42	35-199	Oil guide	1
15				43	84-164	Screw	1
16	67-222	Looper driving lever C	1	44			
17	61-823	Looper driving connecting rod	1	45			
18	75-401	Washer	1	46	71-561	Looper holder shaft	1
19	85-211	Screw	1	47	67-132	Looper avoid lever	1
20	86-411	Nut	1	48	84-612	Screw	1
21	92-231	Bearing	1	49	84-366	Screw	1
22	75-327	Washer	1	50	75-139	Looper holder shaft collar	1
23	75-326	Washer	1	51	71-454	Pin	1
24				52	75-371	Washer	1
25				53	86-314	Nut	1
26	19-305	Looper rocker E	1	54	84-761	Screw	2
27	84-766	Screw	1	55			
28	75-371	Washer	1				
* 57V-A	10-914	Looper holder ass'y (1502)					
57V-B	60-382	Looper connecting link ass'y					
57V-C	60-373	Looper driving connecting link ass'y					

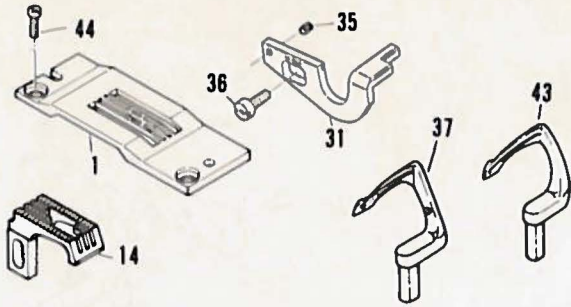
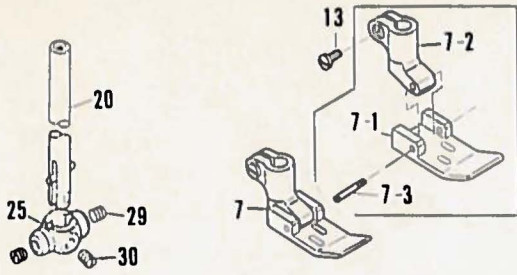
# 8. Foot lifter mechanism (押え上げ機構)



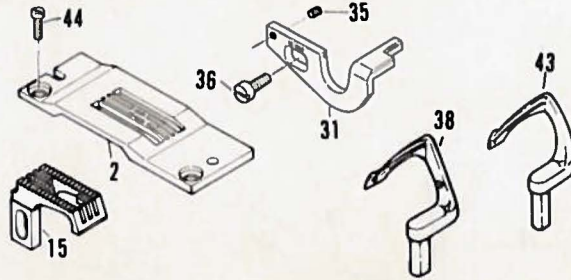
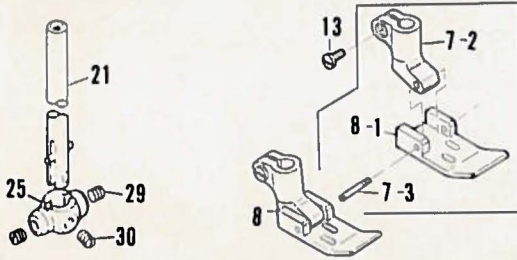
Ref. No.	Part No.	Part Name	Q'ty	Ref. No.	Part No.	Part Name	Q'ty
1	77-101	Lifter lever connecting . . . . .	1	21	84-561	Screw . . . . .	1
2	84-512	Screw . . . . .	2	22	84-563	Screw . . . . .	1
3	84-562	Screw . . . . .	1	23	77-135	Presser bar connecting guide left . . . . .	1
4				24	77-136	Presser bar connecting guide right . . . . .	1
5	77-111	Foot lifter crank shaft B . . . . .	1	25	84-362	Screw . . . . .	4
6	77-121	Crank shaft pipe . . . . .	1	26	79-121	Presser bar spring . . . . .	1
7	77-103	Adjusting post supporter . . . . .	1	27	86-851	Nut . . . . .	1
8	84-812	Screw . . . . .	1	28	85-761	Presser bar screw . . . . .	1
9	84-561	Screw . . . . .	1	29	71-542	Presser bar (small) . . . . .	1
10	23-189	O-ring . . . . .	1	30	75-154	Collar . . . . .	1
11	77-107	Presser foot lifter connecting plate . . . . .	1	31	84-511	Screw . . . . .	1
12	84-764	Screw . . . . .	1	32	75-453	Washer . . . . .	1
13	77-116	Lifter lever connecting bar . . . . .	1	33			
14	93-611	Snap pin A . . . . .	2	34			
15	77-109	Lifter lever spring supporter . . . . .	1	35			
16	79-222	Lifter lever spring . . . . .	1	36	77-143	Presser foot lifter lever . . . . .	1
17	84-781	Screw . . . . .	1	37	84-566	Screw . . . . .	2
18	77-131	Lifter lever link . . . . .	1	38	77-114	Presser foot lifter lever post . . . . .	1
19	84-581	Screw . . . . .	1	39			
20	77-133	Presser bar guide . . . . .	1	40			

# 9. Gauge parts (1) (ゲージ関係(1))

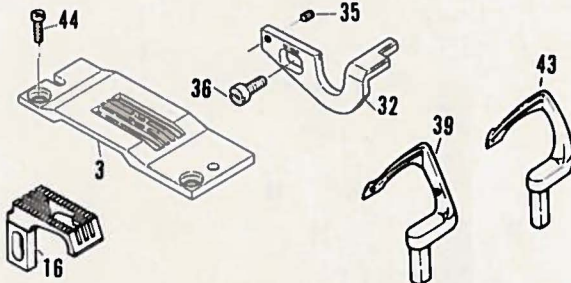
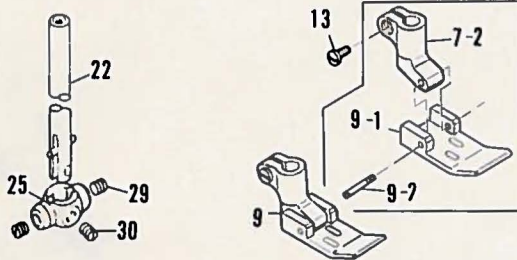
1/8"



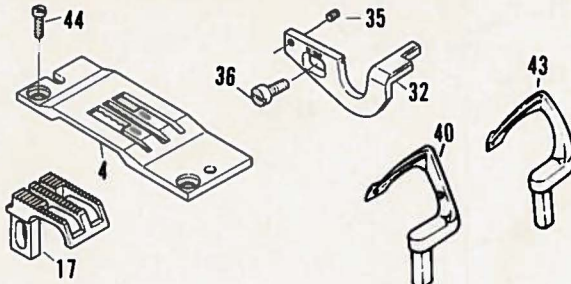
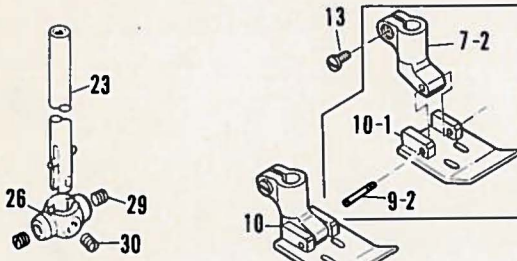
3/16"



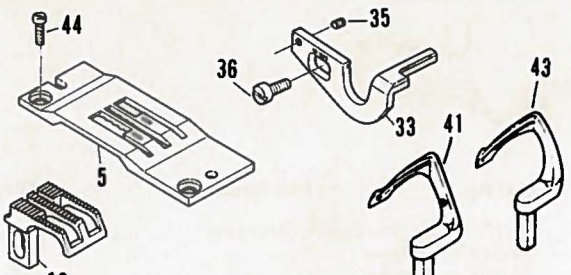
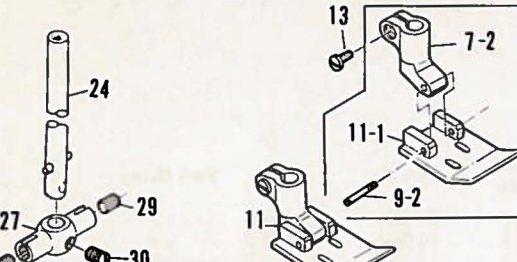
1/4"



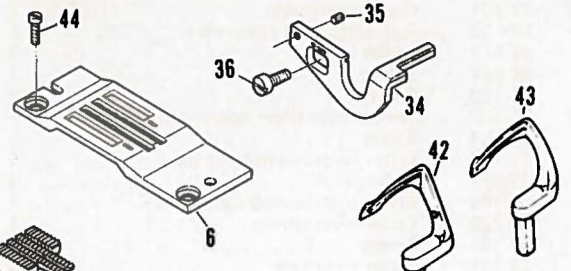
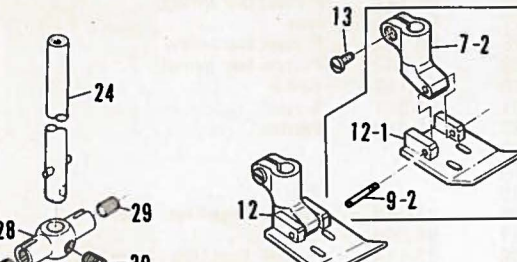
5/16"



3/8"



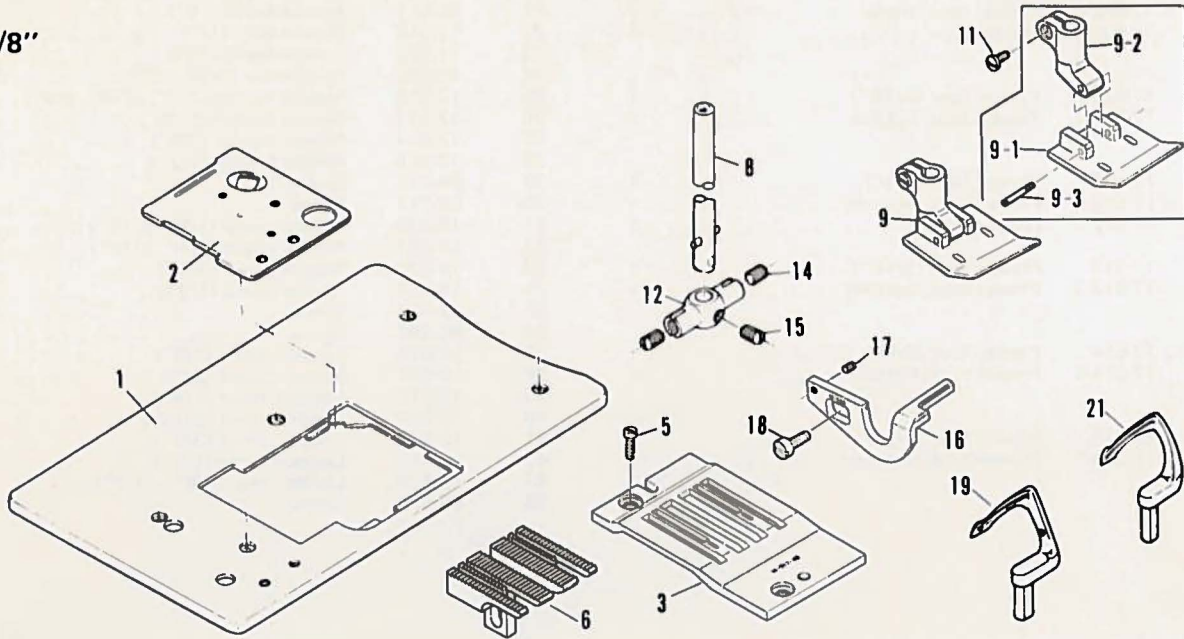
1/2"



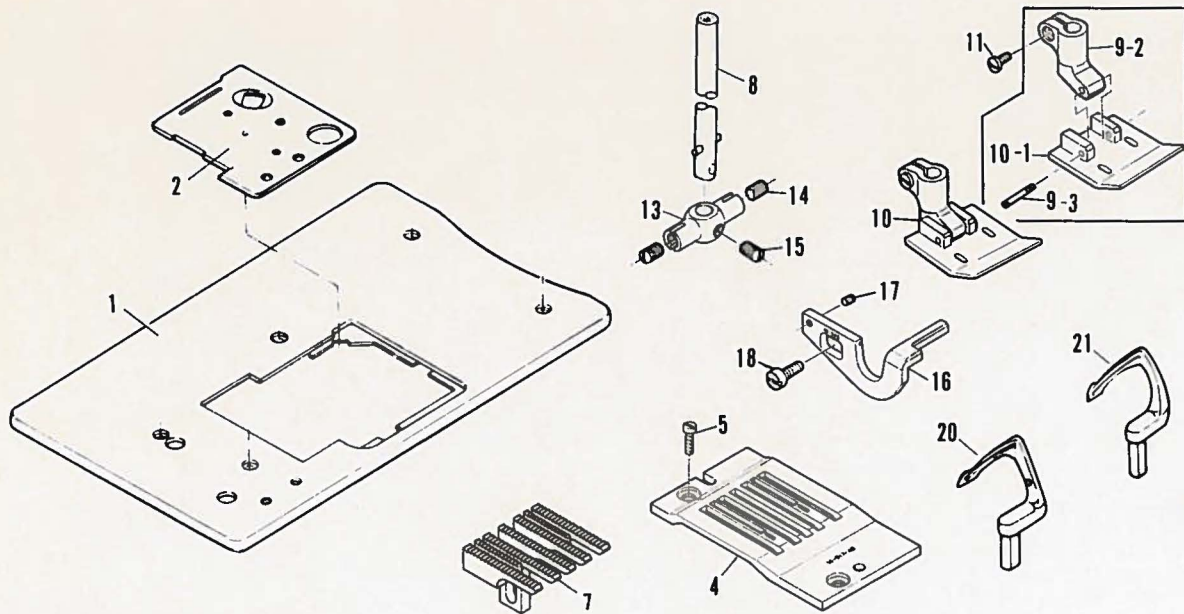
Ref. No.	Part No.	Part Name	Q'ty	Ref. No.	Part No.	Part Name	Q'ty
1	14-510	Needle Plate (1/8")	1	13	84-382	Screw	1
2	14-511	Needle Plate (3/16")	1	14	15-510	Feed dog (1/8")	1
3	14-512	Needle Plate (1/4")	1	15	15-511	Feed dog (3/16")	1
4	14-513	Needle Plate (5/16")	1	16	15-512	Feed dog (1/4")	1
5	14-514	Needle Plate (3/8")	1	17	15-513	Feed dog (5/16")	1
6	14-515	Needle Plate (1/2")	1	18	15-514	Feed dog (3/8")	1
7	17-510	Presser foot (1/8")	1	19	15-515	Feed dog (1/2")	1
7-1	17-510-2	Presser foot, bottom	1	20	11-510	Needle bar (1/8")	1
7-2	17-510-1	Presser foot, shank	1	21	11-511	Needle bar (3/16")	1
7-3	17-510-3	Hinge screw	1	22	11-512	Needle bar (1/4")	1
7-4				23	11-501	Needle bar (5/16")	1
7-5				24	11-502	Needle bar (3/8", 1/2")	1
8	17-511	Presser foot (3/16")	1	25	12-510	Needle holder (1/8", 3/16", 1/4")	1
8-1	17-511-2	Presser foot, bottom	1	26	12-513	Needle holder (5/16")	1
8-2				27	12-514	Needle holder (3/8")	1
8-3				28	12-515	Needle holder (1/2")	1
9	17-512	Presser foot (1/4")	1	29	84-712	Screw	2
9-1	17-512-2	Presser foot, bottom	1	30	84-717	Screw	1
9-2	17-512-3	Hinge screw	1	31	18-520	Needle guard (1/8", 3/16")	1
9-3				32	18-521	Needle guard (1/4", 5/16")	1
10	17-513	Presser foot (5/16")	1	33	18-523	Needle guard (3/8")	1
10-1	17-513-2	Presser foot, bottom	1	34	18-524	Needle guard (1/2")	1
10-2				35	84-113	Screw	1
10-3				36	84-368	Screw	1
11	17-514	Presser foot (3/8")	1	37	19-510	Looper, front (1/8")	1
11-1	17-514-2	Presser foot, bottom	1	38	19-511	Looper, front (3/16")	1
11-2				39	19-512	Looper, front (1/4")	1
11-3				40	19-513	Looper, front (5/16")	1
12	17-515	Presser foot (1/2")	1	41	19-514	Looper, front (3/8")	1
12-1	17-515-2	Presser foot, bottom	1	42	19-515	Looper, front (1/2")	1
12-2				43	19-518	Looper, rear (1/8" - 1/2")	1
12-3				44	84-575	Screw	2

# 10. Gauge parts (2) (ゲージ関係(2))

5/8"



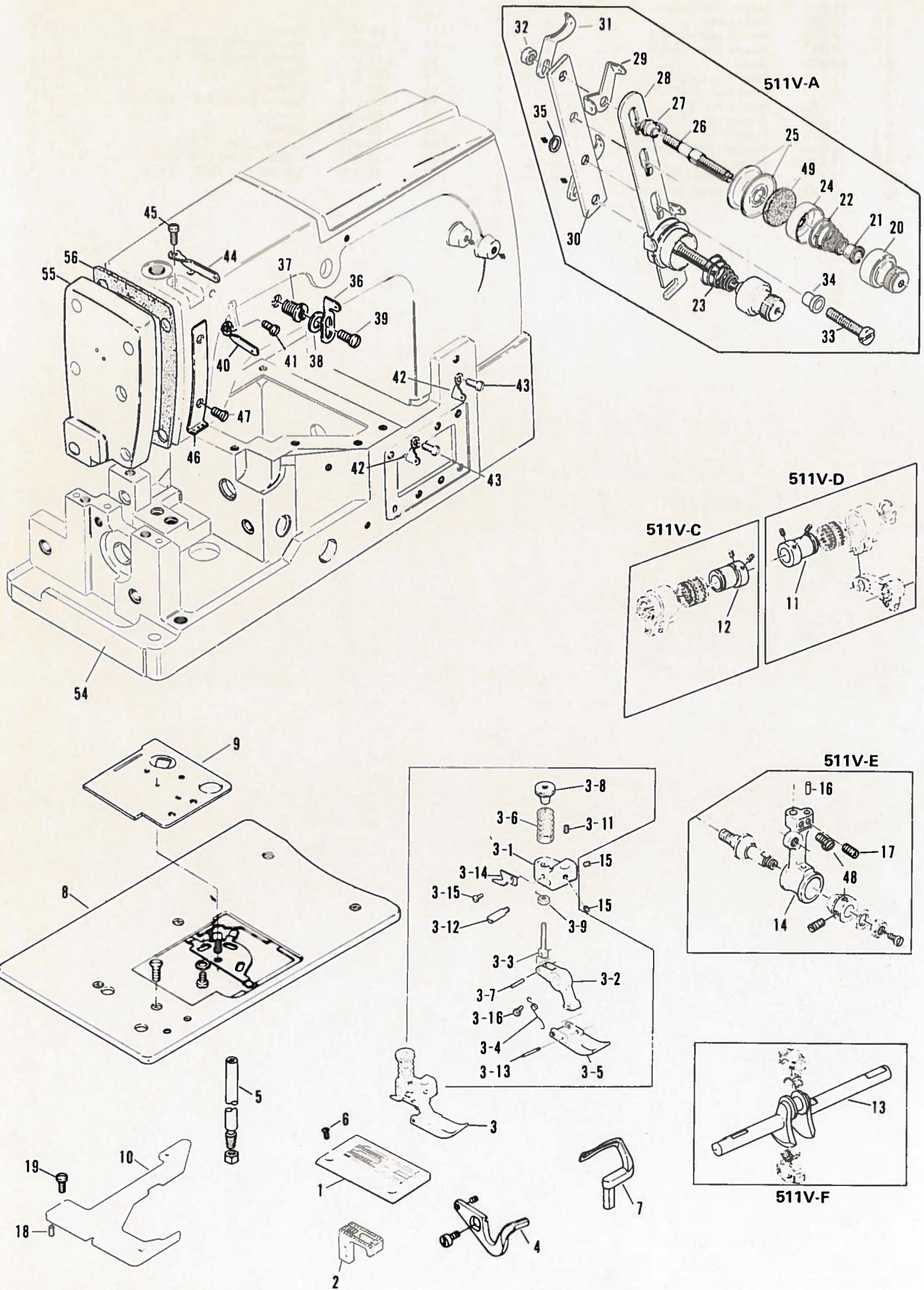
3/4"





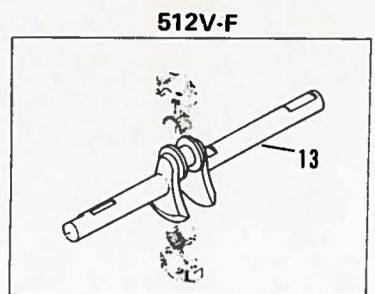
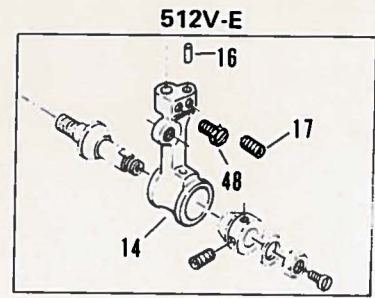
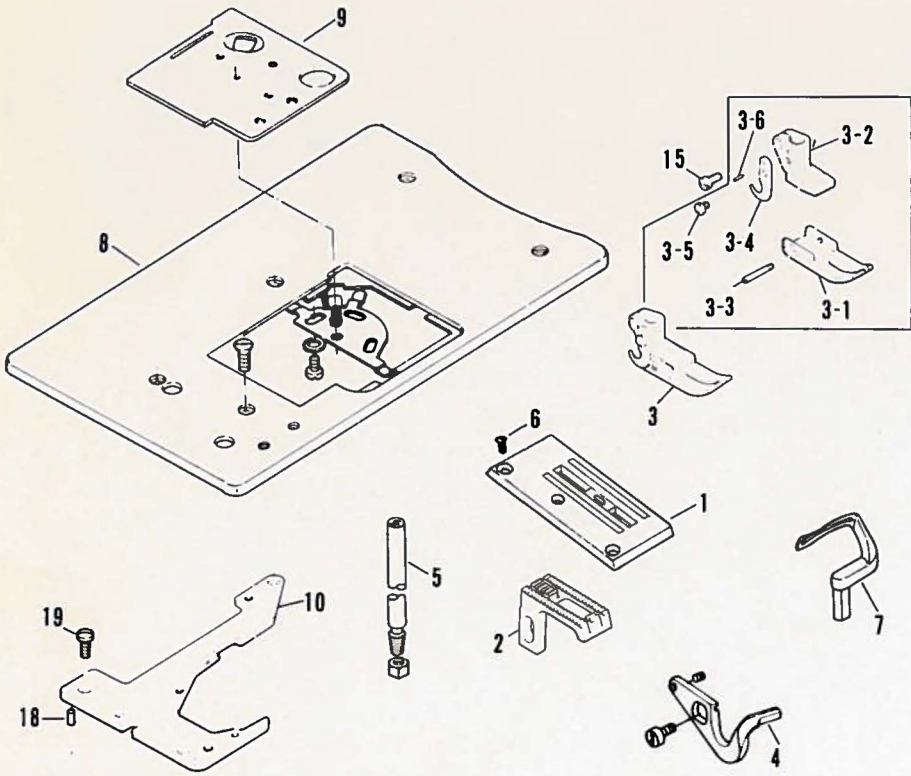
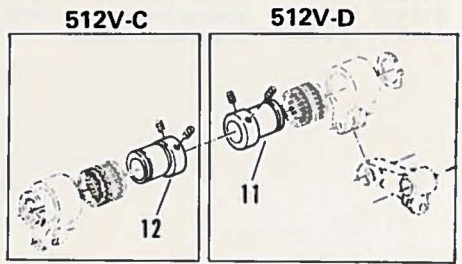
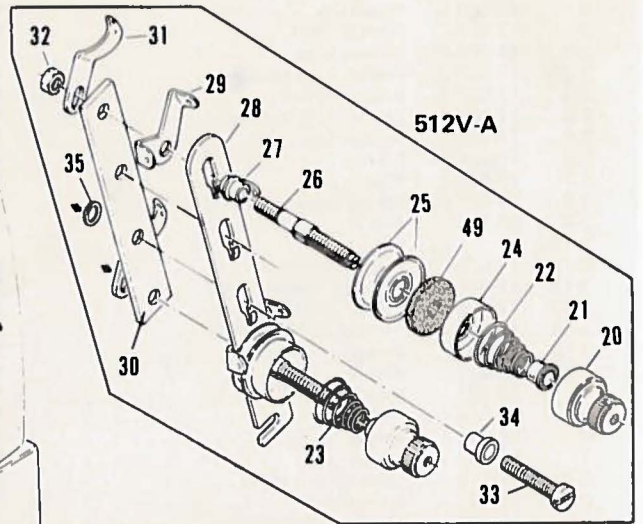
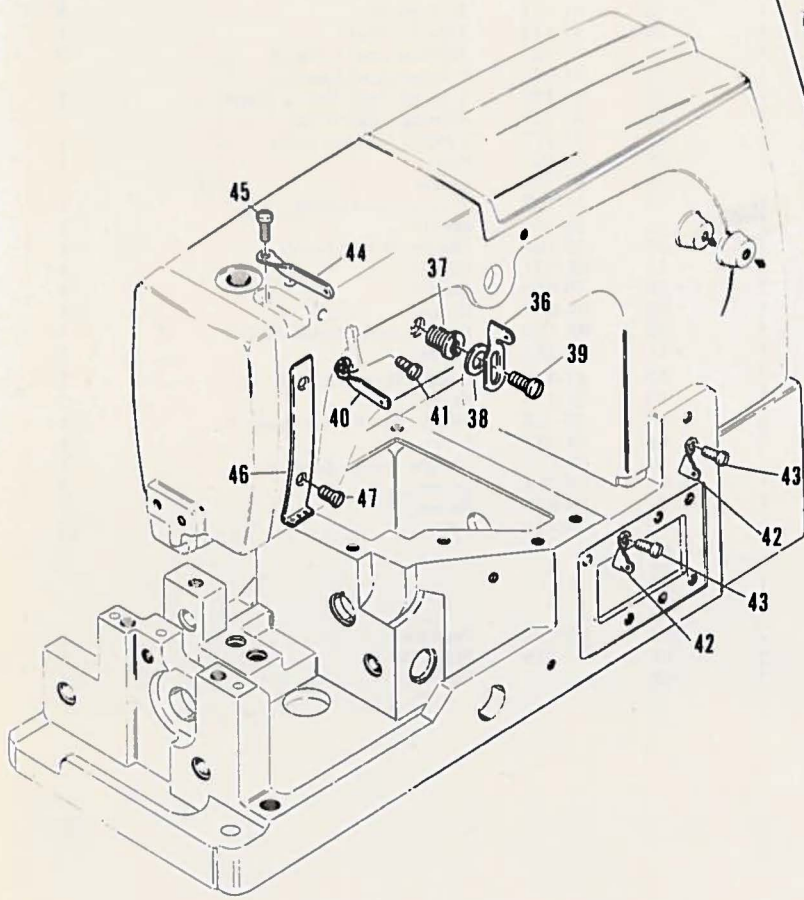
Ref. No.	Part No.	Part Name	Q'ty	Ref. No.	Part No.	Part Name	Q'ty
1	21-557	Upper cloth plate . . . . .	1	10-2			
2	21-523	Slide plate . . . . .	1	10-3			
3	14-516	Needle plate (5/8") . . . . .	1	11	84-382	Screw . . . . .	1
4	14-517	Needle plate (3/4") . . . . .	1	12	12-516	Needle holder (5/8") . . . . .	1
5	84-575	Screw . . . . .	2	13	12-517	Needle holder (3/4") . . . . .	1
6	15-516	Feed dog (5/8") . . . . .	1	14	84-712	Screw . . . . .	2
7	15-517	Feed dog (3/4") . . . . .	1	15	84-717	Screw . . . . .	1
8	11-502	Needle bar (5/8", 3/4") . . . . .	1	16	18-525	Needle guard (5/8", 3/4") . . . . .	1
9	17-516	Presser foot (5/8") . . . . .	1	17	84-368	Screw . . . . .	1
9-1	17-516-2	Presser foot, bottom . . . . .	1	18	84-113	Screw . . . . .	1
9-2	17-510-1	Presser foot, shank . . . . .	1	19	19-516	Looper, front (5/8") . . . . .	1
9-3	17-512-3	Hinge screw . . . . .	1	20	19-517	Looper, front (3/4") . . . . .	1
10	17-517	Presser foot (3/4") . . . . .	1	21	19-519	Looper, rear (5/8", 3/4") . . . . .	1
10-1	17-516-2	Presser foot, bottom . . . . .	1				

Subclass model サブクラス機種  
**11. 1501MF**



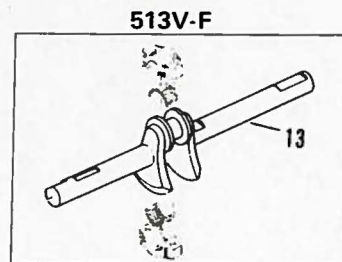
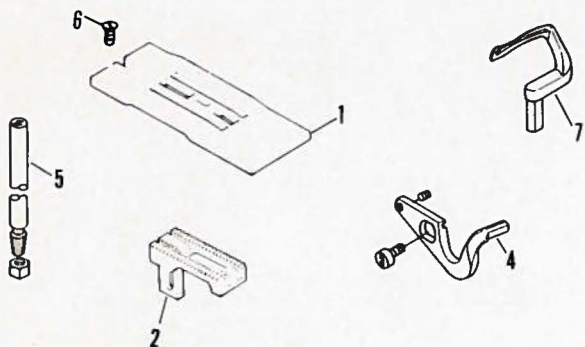
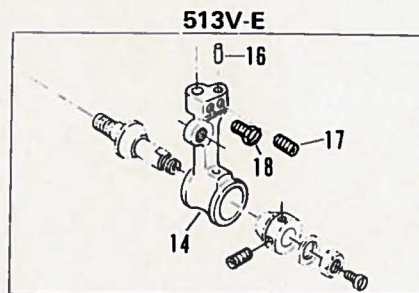
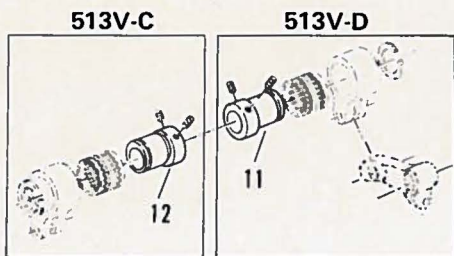
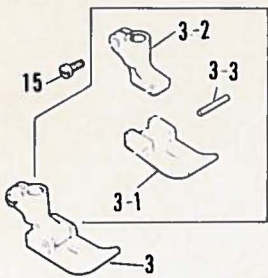
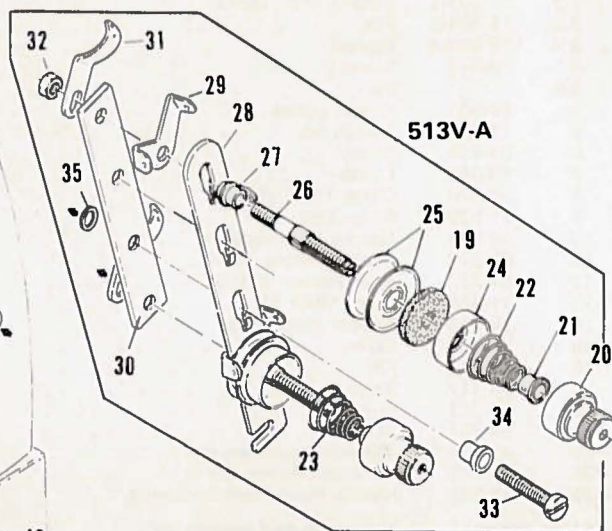
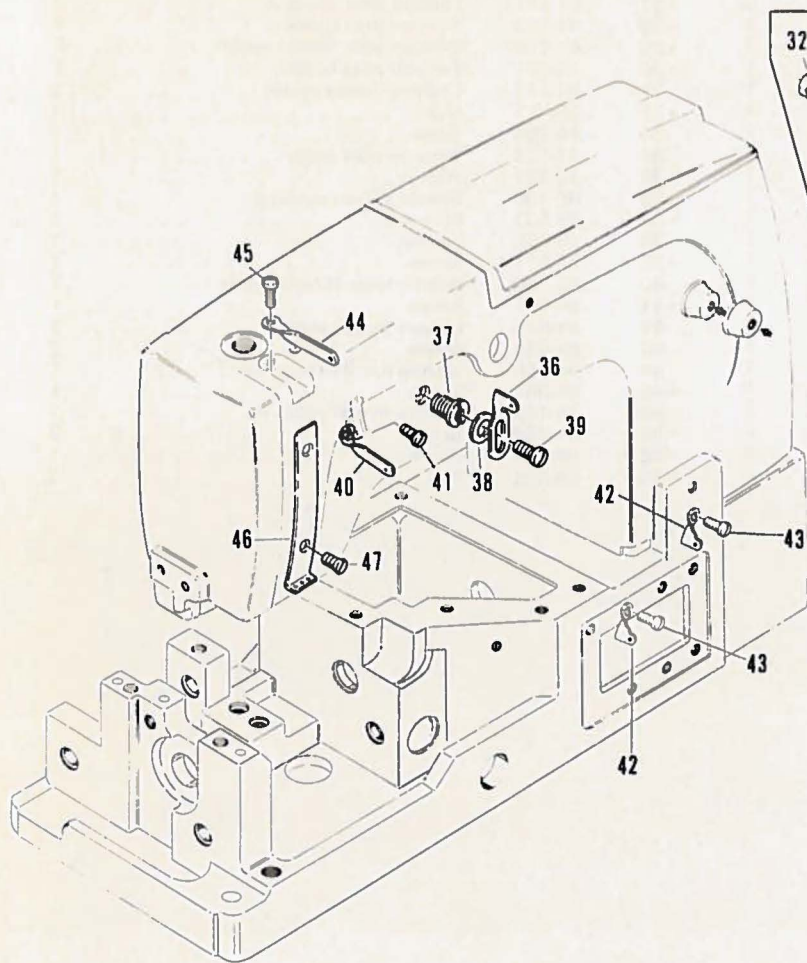
Ref. No.	Part No.	Part Name	Q'ty	Ref. No.	Part No.	Part Name	Q'ty
1	14-506	Needle plate	1	* 21	41-105	Tension disc ratchet	2
2	15-506	Feed dog	1	* 22	41-701	Needle thread tension spring	1
3	17-506	Presser foot	1	* 23	41-702	Looper thread tension spring	1
3-1	17-506-1	Presser boss	1	* 24	41-107	Tension disc cover	2
3-2	17-506-2	Presser foot bracket	1	* 25	41-111	Tension disc	4
3-3	17-506-3	Adjusting bolt	1	* 26	41-172	Tension post	1
3-4	17-506-4	Presser foot spring	1	* 27	41-131	Tension post collar A	2
3-5	17-506-5	Presser foot	1	* 28	41-113	Tension post support	1
3-6	17-506-6	Spring	1	* 29	41-115	Tension post thread eyelet	2
3-7	17-506-7	Fixing pin	1	* 30	41-121	Tension post holder	1
3-8	17-506-8	Spring regulating nut	1	* 31	41-117	Lead in thread eyelet	2
3-9	86-211	Nut A	1	* 32	86-411	Nut	1
3-10				33	84-764	Screw	1
3-11	17-506-11	Adjusting screw	1	34	41-132	Tension post collar	1
3-12	17-506-12	Bracket mounting pin	1	35	75-381	Washer	1
3-13	17-506-13	Presser foot fixing pin	1	* 36	45-100	Needle thread eyelet 1	1
3-14	17-506-14	Thread cutting scalpel	1	* 37	85-531	Screw	1
3-15	84-163	Screw	1	* 38	75-456	Washer	1
3-16	85-611	Screw	1	* 39	84-571	Screw	1
4	18-501	Needle guard	1	40	45-120	Needle lever thread eyelet 1	1
5	11-504	Needle bar	1	* 41	84-361	Screw	1
6	84-464	Screw	2	42	41-416	Looper thread eyelet	2
7	19-501	Looper	1	43	84-374	Screw	2
8	21-570	Upper cloth plate	1	44	45-130	Needle bar thread eyelet 1	1
9	21-527	Slide plate	1	45	84-363	Screw	1
10	14-055	Needle plate support	1	46	45-151	Needle thread guide A	1
11	61-322	Feed eccentric (0.9)	1	* 47	84-464	Screw	2
12	61-322	Feed eccentric (0.9)	1	* 48	84-616	Screw	1
13	71-854	Crank shaft 5M	1	49	23-324	Felt	2
14	19-315	Looper holder set	1	50			
15	84-512	Screw	2	51			
16	71-216	Pin	1	52			
17	84-112	Screw	1	53			
18	71-251	Pin	2	54	22-558	Arm bed	1
19	84-761	Screw	3	55	21-335	Plate MF	1
* 20	41-101	Tension regulating nut	2	56		Packing	1
511V-A	40-111	Looper thread tension ass'y					
511V-C	60-090	Feed eccentric link ass'y					
511V-D	60-790	Looper avoid eccentric link ass'y					
511V-E	10-915	Looper holder ass'y (501)					
511V-F	70-035	Crank shaft 5M ass'y					

Subclass model サブクラス機種  
**12. 1501M**



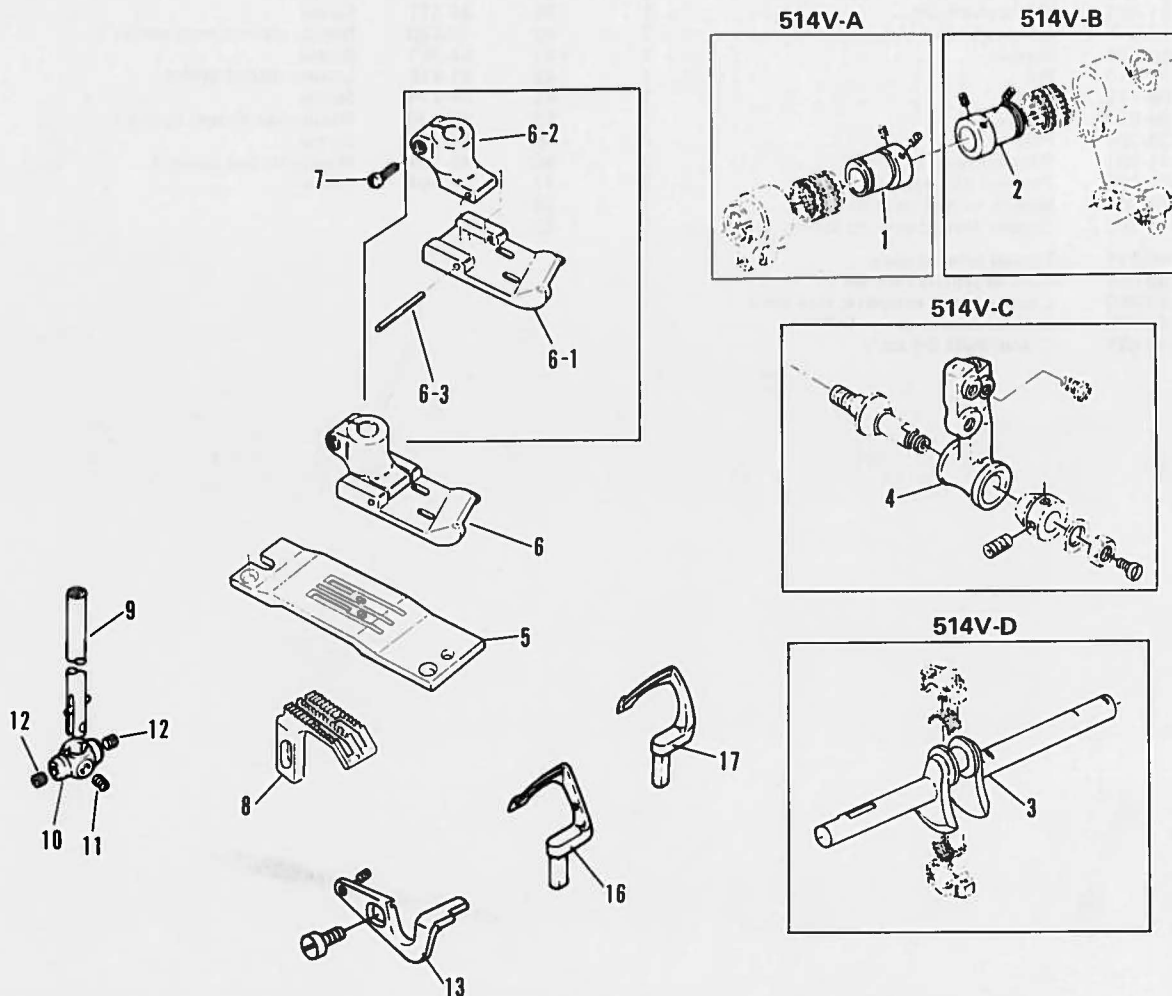
Ref. No.	Part No.	Part Name	Q'ty	Ref. No.	Part No.	Part Name	Q'ty
1	14 501	Needle plate	1	•23	41-702	Looper thread tension spring	1
2	15 501	Feed dog	1	•24	41-107	Tension disc cover	2
3	17-501	Presser foot	1	•25	41-111	Tension disc	4
3-1	17-501-2	Presser foot, bottom	1	•26	41-172	Tension post	1
3-2	17-501-1	Presser foot, shank	1	•27	41-131	Tension post collar A	2
3-3	17-501-3	Pin	1	•28	41-113	Tension post support	1
3-4	17-501-4	Scalpel	1	•29	41-115	Tension post thread eyelet	2
3-5	85-611	Screw	1	•30	41-121	Tension post holder	1
3-6		Pin	1	•31	41-117	Lead in thread eyelet	2
4	18 501	Needle guard	1	•32	86-411	Nut	1
5	11 504	Needle bar	1	33	84-764	Screw	1
6	84 464	Screw	2	34	41-132	Tension post collar	1
7	19 501	Looper	1	35	75-381	Washer	1
8	21 570	Upper cloth plate	1	36	45-100	Needle thread eyelet 1	1
9	21 528	Slide plate	1	•37	85-531	Screw	1
10	14 052	Needle plate support	1	•38	75-456	Washer	1
11	61-322	Feed eccentric (0.9)	1	•39	84-571	Screw	1
12	61-322	Feed eccentric (0.9)	1	40	45-120	Needle lever thread eyelet 1	1
13	71-854	Crank shaft 5M	1	•41	84-361	Screw	1
14	19-315	Looper holder set	1	42	41-416	Looper thread eyelet	2
15	84 382	Screw	1	43	84-374	Screw	2
16	71-216	Pin	1	44	45-130	Needle bar thread eyelet 1	1
17	84-112	Screw	1	•45	84-363	Screw	1
18	71-251	Pin	2	46	45-151	Needle thread guide A	1
19	84-761	Screw	3	•47	84-464	Screw	2
•20	41-101	Tension regulating nut	2	•48	84-616	Screw	1
•21	41-105	Tension disc ratchet	2	•49	23-324	Felt	2
•22	41-701	Needle thread tension spring	1				
512V-A	40-111	Looper thread tension ass'y					
512V-C	60-090	Feed eccentric link ass'y					
512V-D	60-790	Looper avoid eccentric link ass'y					
512V-E	10-915	Looper holder ass'y (501)					
512V-F	70-035	Crank shaft 5M ass'y					

# 13. 1501HD



Ref. No.	Part No.	Part Name	Q'ty	Ref. No.	Part No.	Part Name	Q'ty
1	14-502	Needle plate	1	•24	41-107	Tension disc cover	2
2	16-502	Feed dog	1	•25	41-111	Tension disc	4
3	17-502	Presser foot	1	•26	41-172	Tension post	1
3-1	17-502-2	Presser foot, bottom	1	•27	41-131	Tension post collar A	2
3-2	27-502-1	Presser foot, shank	1	•28	41-113	Tension post support	1
3-3	17-502-3	Pin	1	•29	41-115	Tension post thread eyelet	2
4	18-501	Needle guard	1	•30	41-121	Tension post holder	1
5	11-504	Needle bar	1	•31	41-117	Lead in thread eyelet	2
6				•32	86-411	Nut	1
7	19-502	Looper	1	33	84-764	Screw	1
8				34	41-132	Tension post collar	1
9				35	75-381	Washer	1
10				36	45-100	Needle thread eyelet 1	1
11	61-322	Feed eccentric (0.9)	1	•37	85-531	Screw	1
12	61-322	Feed eccentric (0.9)	1	•38	75-456	Washer	1
13	71-851	Crank shaft 5H	1	•39	84-571	Screw	1
14	19-315	Looper holder set	1	40	45-120	Needle lever thread eyelet 1	1
15	84-382	Screw	1	•41	84-361	Screw	1
16	71-216	Pin	1	42	41-416	Looper thread eyelet	2
17	84-112	Screw	1	43	84-374	Screw	2
•18	84-616	Screw	1	44	45-130	Needle bar thread eyelet 1	1
•19	23-324	Felt	2	•45	84-363	Screw	1
•20	41-101	Tension regulating nut	2	46	45-151	Needle thread guide A	1
•21	41-105	Tension disc ratchet	2	•47	84-464	Screw	2
•22	41-701	Needle thread tension spring	1	48			
•23	41-702	Looper thread tension spring	1	49			
513V-A	40-111	Thread tension ass'y					
513V-C	60-090	Feed eccentric link ass'y					
513V-D	60-090	Looper avoid eccentric link ass'y					
513V-E	60-790	Looper holder ass'y (501)					
513V-F	70-025	Crank shaft 5H ass'y					

# 14. 1502V-HD

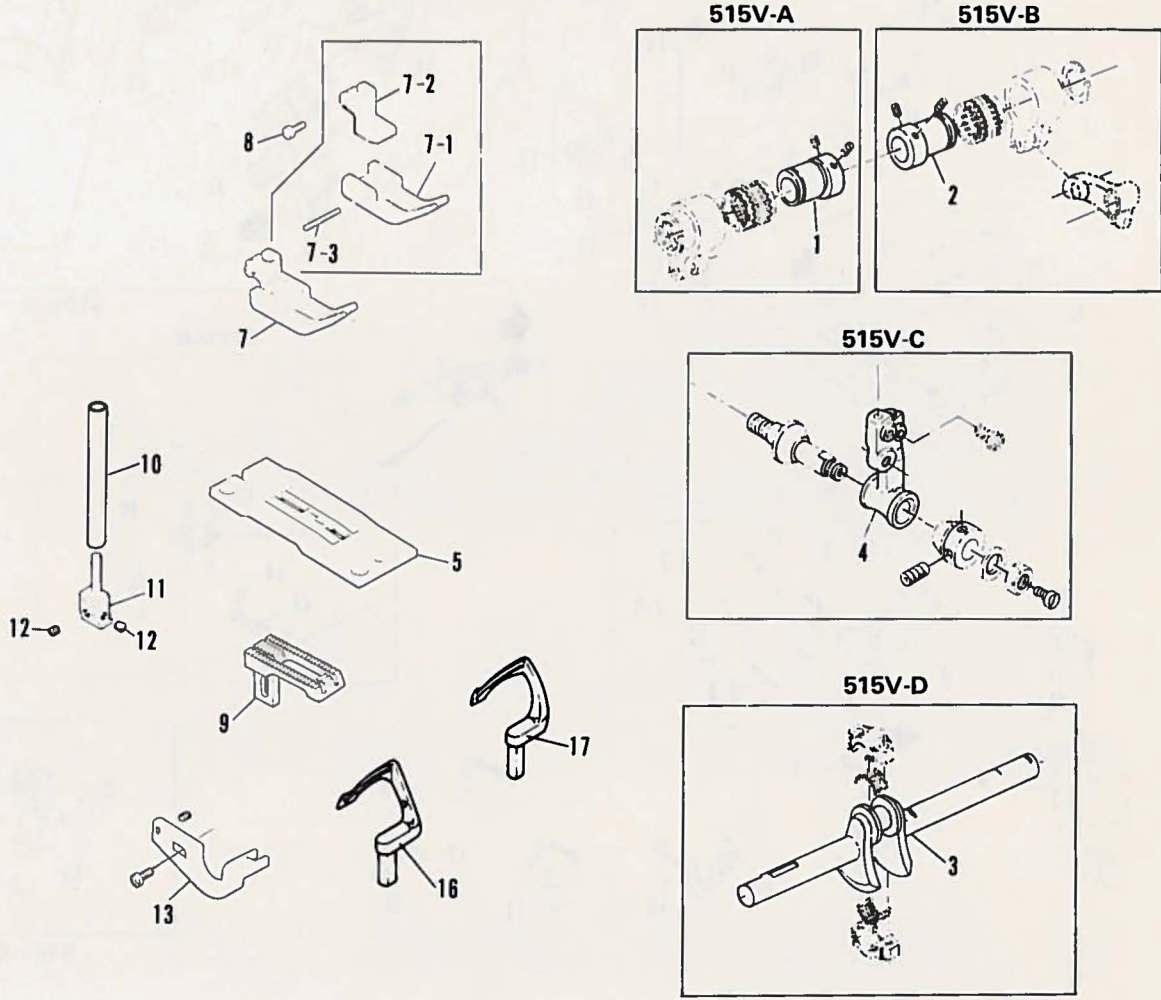


Ref. No.	Part No.	Part Name	Q'ty
1	61-322	Feed eccentric 0.9	1
2	61-322	Feed eccentric 0.9	1
3	71-851	Crank shaft 5H	1
4	19-318	Looper holder H	1
5	14-522	Needle plate (1/4")	1
6	17-522	Presser foot (1/4")	1
6-1	17-522-2	Presser foot bottom	1
6-2	17-522-1	Presser foot shank	1
6-3	17-522-3	Pin	1
6-4			
6-5			
514V-A	60-090	Feed eccentric link ass'y	
514V-B	60-790	Looper avoid eccentric link ass'y	
514V-C	10-918	Looper holder ass'y	
514V-D	70-025	Crank shaft 5H ass'y	

Ref. No.	Part No.	Part Name	Q'ty
7	84-382	Screw	1
8	15-522	Feed dog (1/4")	1
9	11-512	Needle bar (1/4")	1
10	12-510	Needle holder (1/4")	1
11	84-717	Screw	1
12	84-712	Screw	2
13	18-522	Needle guard	1
14			
15			
16	19-521	Looper, front (1/4")	1
17	19-522	Looper, rear	1



# 15. 1502T

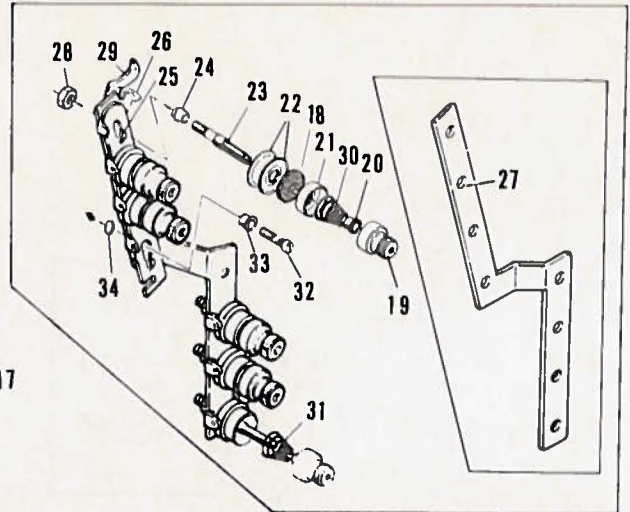
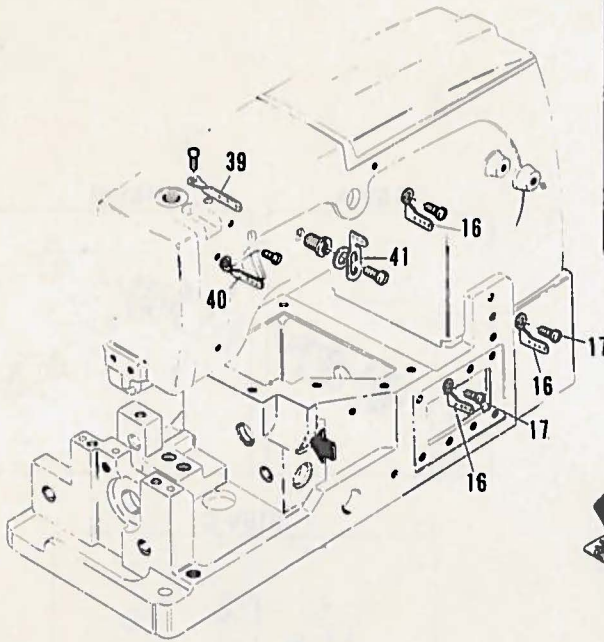


Ref. No.	Part No.	Part Name	Q'ty
1	61-322	Feed eccentric 0.9	1
2	61-322	Feed eccentric 0.9	1
3	71-851	Crank shaft 5H	1
4	19-318	Looper holder H	1
5	14-527	Needle plate (1/32")	1
6			
7	17-526	Presser foot (1/32")	1
7-1	17-526-2	Presser foot bottom	1
7-2	17-526-1	Presser foot shank	1
7-3	17-526-3	Pin	1
7-4			

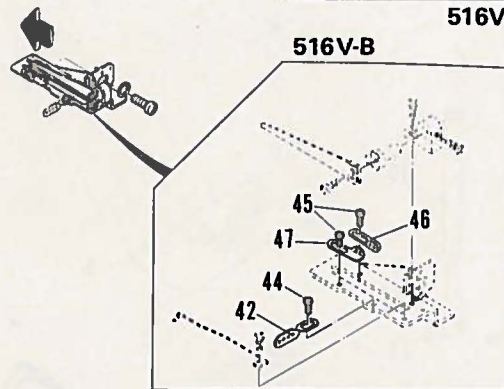
515V-A	60-090	Feed eccentric link ass'y
515V-B	60-790	Looper avoid eccentric link
515V-C	10-918	Looper holder ass'y
515V-D	70-025	Crank shaft 5H ass'y

Ref. No.	Part No.	Part Name	Q'ty
8	84-382	Screw	1
9	15-526	Feed dog	1
10	11-704	Needle bar	1
11	12-527	Needle holder (1/32")	1
12	84-711	Screw	2
13	18-527	Needle guard (1/32")	1
14			
15			
16	19-528	Looper, front (1/32")	1
17	19-529	Looper, rear (1/32")	1

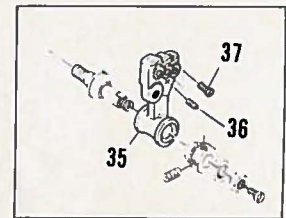
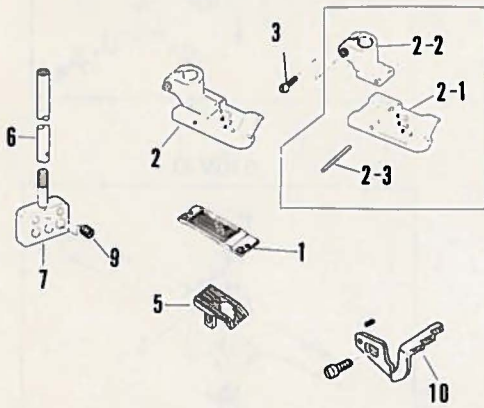
# 16. 1503V



516V-A



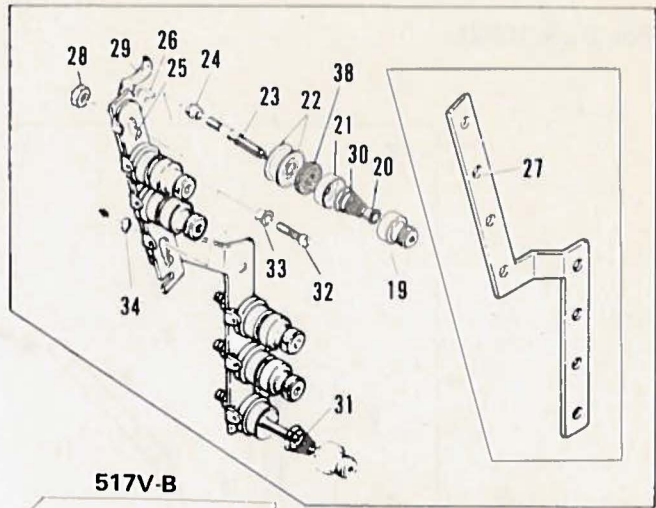
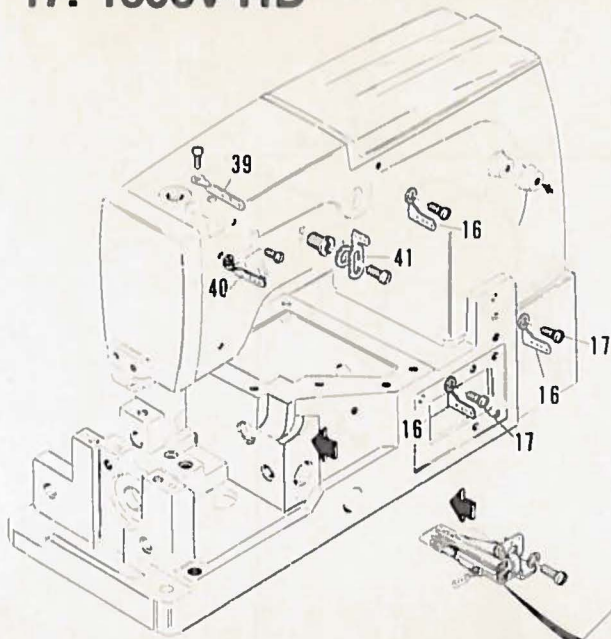
516V-B



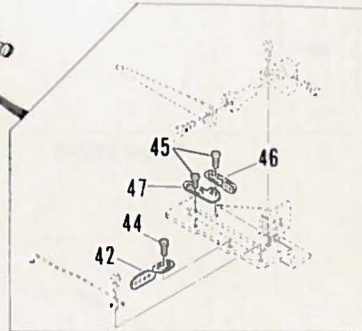
516V-C

Ref. No.	Part No.	Part Name	Q'ty	Ref. No.	Part No.	Part Name	Q'ty
1	14-532	Needle plate (1/4")	1	*22	41-111	Tension disc	12
2	17-532	Presser foot (1/4")	1	*23	41-172	Tension post	6
2-1	17-532-2	Presser foot bottom	1	*24	41-131	Tension post collar A	6
2-2	17-532-1	Presser foot shank	1	*25	41-113	Tension post support	1
2-3	17-532-3	Pin	1	*26	41-115	Tension post thread eyelet	6
2-4				27	41-123	Tension post holder large	1
2-5				*28	86-411	Nut	5
3	84-382	Screw	2	*29	41-117	Lead in thread eyelet	6
4				*30	41-701	Needle thread tension spring	3
5	15-532	Feed dog (1/4")	1	31	41-702	Looper thread tension spring	3
6	11-704	Needle bar (1/4")	1	32	84-764	Screw	1
7	12-553	Needle holder (1/4")	1	33	41-132	Tension post collar B	1
8				34	75-381	Washer	1
9	84-311	Screw	3	35	19-316	Looper holder F	1
10	18-531	Needle guard	1	*36	84-521	Screw	1
11	19-531	Looper, front (1/4")	1	*37	84-616	Screw	2
12	19-535	Looper, center	1	38			
13	19-536	Looper, rear (1/4")	1	39	45-132	Needle bar thread eyelet 3	1
14				40	45-118	Needle lever thread eyelet 3	1
15				41	45-103	Needle thread eyelet 3	1
16	47-103	Thread eyelet	3	42	47-121	Looper thread eyelet	1
17	84-362	Screw	3	43			
*18	23-324	Felt	6	44	84-163	Screw	1
*19	41-101	Tension disc cover (small)	6	45	84-163	Screw	2
*20	41-105	Tension disc ratchet	6	46	47-127	Looper thread guide eyelet (right)	1
*21	41-107	Tension disc cover (large)	6	47	47-128	Looper thread guide eyelet (left)	1
516V-A	40-133	Looper thread tension ass'y					
516V-B	40-354	Cast-off support B ass'y					
516V-C	10-916	Looper holder ass'y					

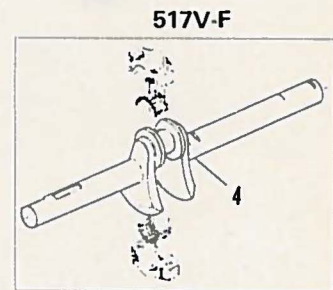
# 17. 1503V-HD



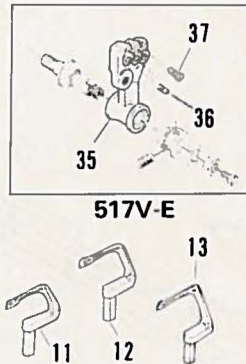
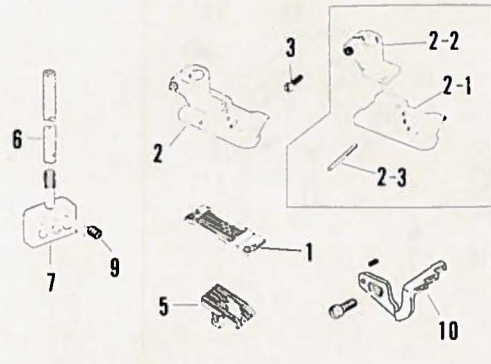
517V-A



517V-E

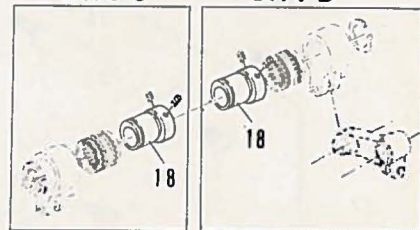


517V-F



517V-C

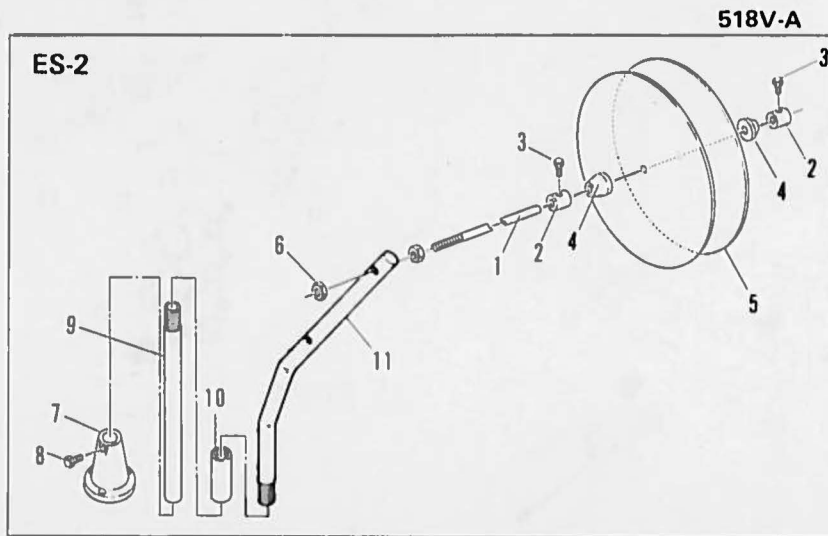
517V-D



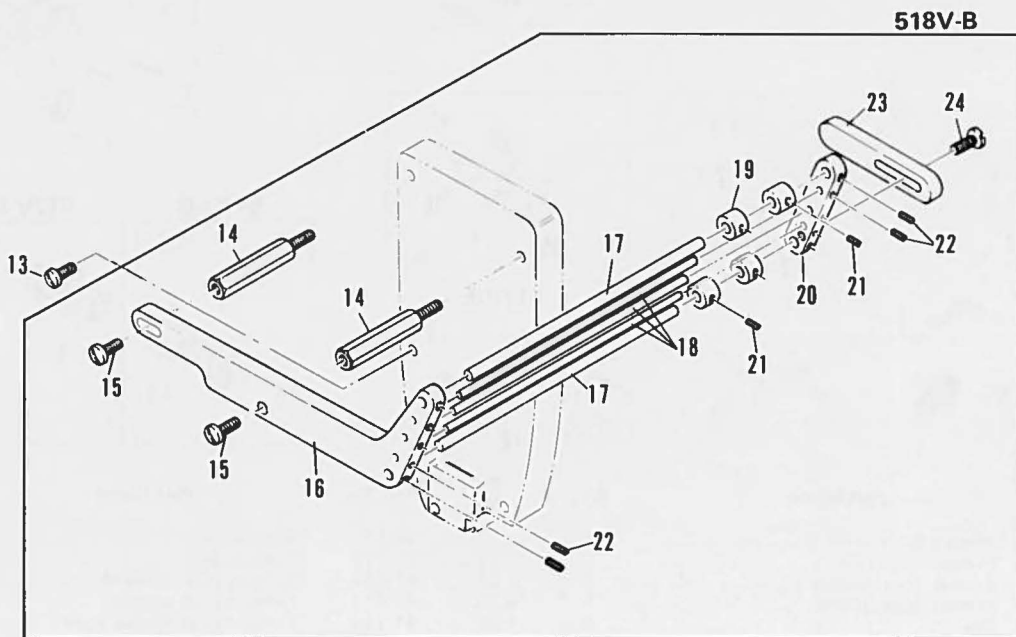
Ref. No.	Part No.	Part Name	Q'ty	Ref. No.	Part No.	Part Name	Q'ty
1	14-532	Needle plate (1/4")	1	*22	41-111	Tension disc	12
2	17-532	Presser foot (1/4")	1	*23	41-172	Tension post	6
2-1	17-532-2	Presser foot, bottom	1	*24	41-131	Tension post collar A	6
2-2	17-532-1	Presser foot, shank	1	*25	41-113	Tension post support	1
2-3	17-532-3	Pin	1	*26	41-115	Tension post thread eyelet	6
2-4				27	41-123	Tension post holder, large	1
2-5				*28	86-411	Nut	5
3	84-382	Screw	2	*29	41-117	Lead in thread eyelet	6
4	71-851	Crank shaft 5H	1	*30	41-701	Needle thread tension spring	3
5	15-532	Feed dog (1/4")	1	*31	41-702	Looper thread tension spring	3
6	11-704	Needle bar (1/4")	1	32	84-764	Screw	1
7	12-553	Needle holder (1/4")	1	33	41-132	Tension post collar B	1
8				34	75-381	Washer	1
9	84-311	Screw	3	35	19-316	Looper holder F	1
10	18-531	Needle guard	1	36	84-521	Screw	1
11	19-531	Looper, front (1/4")	1	37	84-616	Screw	2
12	19-535	Looper, center	1	*38	23-324	Felt	6
13	19-536	Looper, rear (1/4")	1	39	45-132	Needle bar thread eyelet 3	1
14				40	45-118	Needle lever thread eyelet 3	1
15				41	45-103	Needle thread eyelet 3	1
16	47-103	Thread eyelet	3	42	47-121	Looper thread eyelet	1
17	84-362	Screw	3	43			
18	61-322	Feed eccentric (0.9)	2	44	84-164	Screw	1
*19	41-101	Tension disc cover (small)	6	45	84-161	Screw	2
*20	41-105	Tension disc ratchet	6	46	47-127	Looper thread guide eyelet (right)	1
*21	41-107	Tension disc cover (large)	6	47	47-128	Looper thread guide eyelet (left)	1
517V-A	40-133	Looper thread tension ass'y					
517V-B	40-354	Cast-off support B ass'y					
517V-C	60-090	Feed eccentric link ass'y					
517V-D	60-790	Looper avoid eccentric link ass'y					
517V-E	10-916	Looper holder ass'y					
517V-F	70-025	Crank shaft 5H ass'y					

# 18. Tape stands, Attachments (テープ立て・アタッチメント)

For DLR-1502L



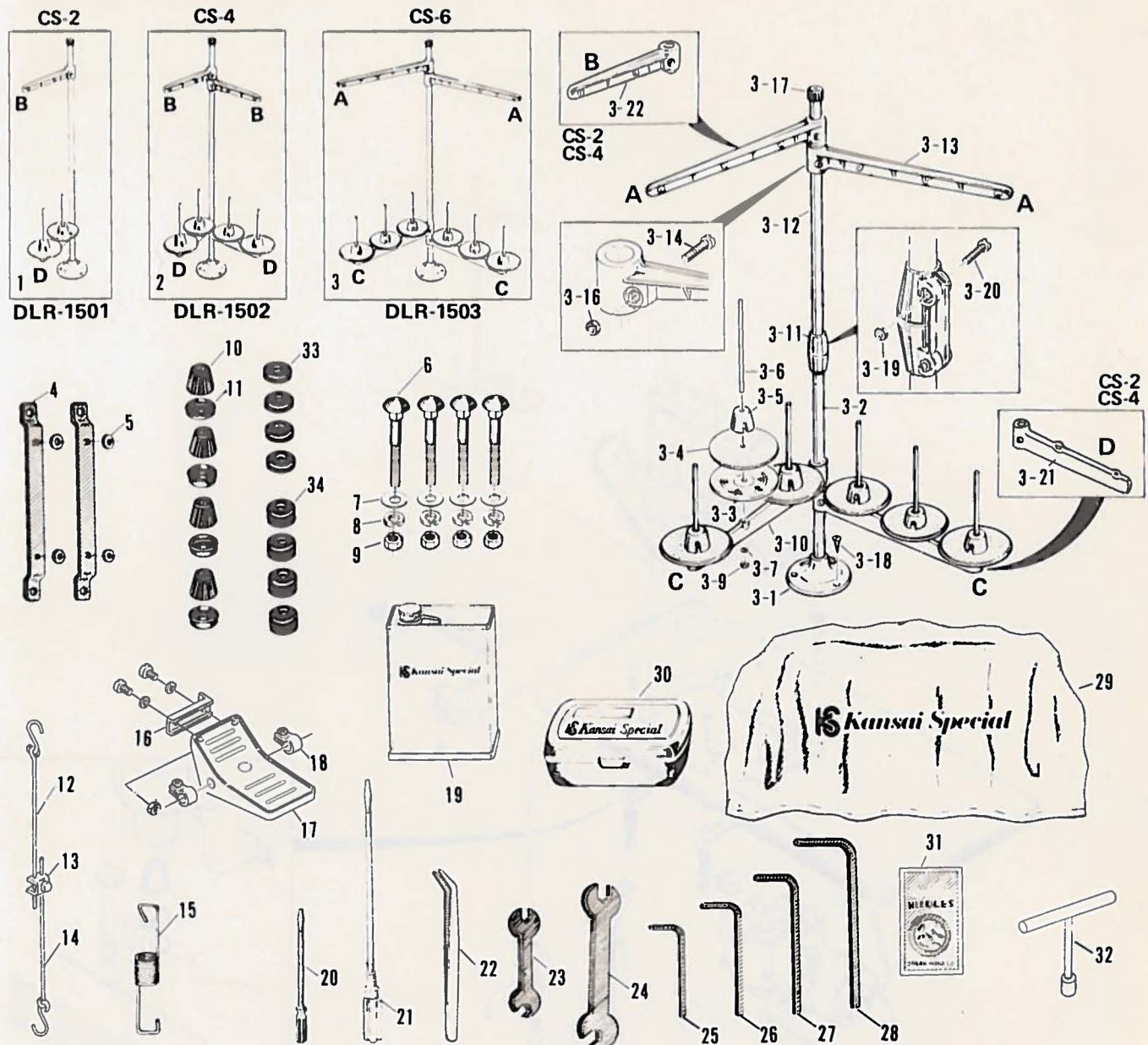
Tape stand



Tape guide

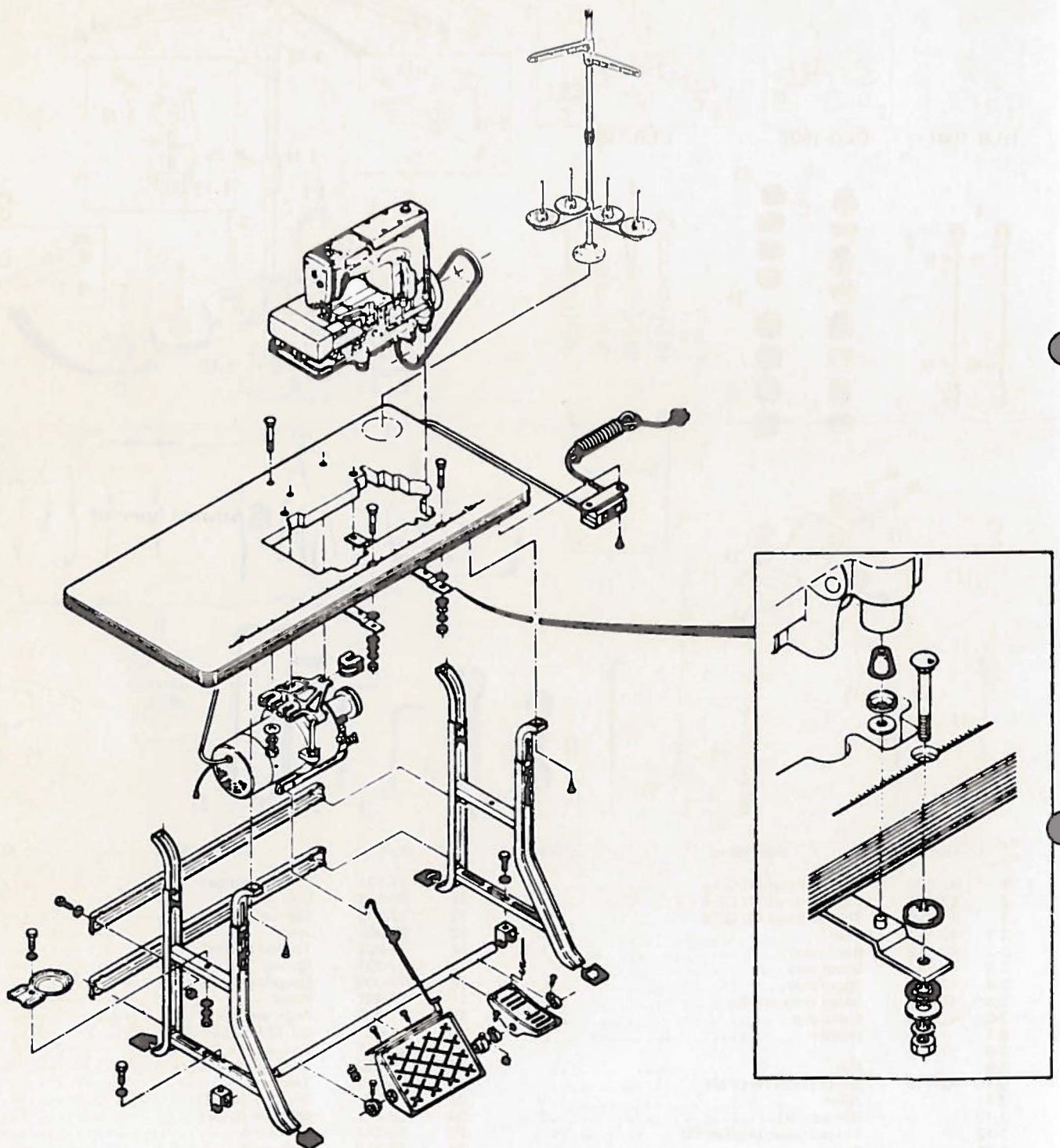
Ref. No.	Part No.	Part Name	Q'ty	Ref. No.	Part No.	Part Name	Q'ty
1	26-866	Tape reel post	1	13	84-566	Screw	3
2	26-869	Stop collar	2	14	26-709	Mount bracket	2
3	87-156	Hex. bolt	2	15	84-571	Screw	2
4	26-868	Collar	2	16	26-716	Guide bracket	1
5	26-867	Tape reel disc	2	17	26-719	Guide shaft, large	2
6	88-176	Nut	2	18	26-720	Guide shaft, small	3
7	26-876	Base	1	19	75-097	Collar, large	4
8	87-161	Hex. bolt	2	20	26-717	Guide fixing bracket	1
9	26-877	Post A	1	21	84-361	Screw	4
10	26-879	Connecting pipe	1	22	84-521	Screw	10
11	26-878	Post B	1	23	26-718	Guide clamp	1
12				24	84-571	Screw	1
518V-A	20-602	Tape stand ass'y					
518V-B	20-642	Tape guide ass'y					

# 19. Thread stands, Accessories (糸立て・アクセサリー)



Ref. No.	Part No.	Part Name	Q'ty	Ref. No.	Part No.	Part Name	Q'ty
1	42-002	Thread stand (2) GS-2	1	10	31-161	Cushion rubber	4
2	42-004	Thread stand (4) GS-4	1	11	39-104	Disc	4
3	42-006	Thread stand (6) GS-6	1	12	77-006	Tie-rod (upper)	1
3-1	42-111	Base	1	13	77-005	Joint	1
3-2	42-112	Bar (lower)	1	14	77-007	Tie-rod (lower)	1
3-3	42-123	Spool tray	1	15	77-003	Spring	1
3-4	42-119	Spool mat	1	16	77-004	Coupling	1
3-5	42-118	Spool retaining fin	1	17	77-001	Pedal	1
3-6	42-117	Spool pin	1	18	77-002	Pedal stopper	2
3-7		Washer	1	19	28-611	Oil TELLESSO 33	1
3-8		Nut	1	20	28-451	Screwdriver (small)	1
3-9		Nut	1	21	28-452	Screwdriver (large)	1
3-10	42-115	Spool pin bracket (3)	1	22	28-011	Tweezers	1
3-11		Joint	1	23	28-421	Spanner (small)	1
3-12		Bar (upper)	1	24	28-422	Spanner (large)	1
3-13		Thread guide bracket (3)	1	25	28-311	Wrench A	1
3-14		Screw	1	26	28-312	Wrench B	1
3-15		Screw	1	27	28-313	Wrench C	1
3-16		Nut	1	28	28-314	Wrench D	1
3-17	42-120	Cup	1	29	28-021	Machine cover	1
3-18	42-122	Screw	3	30	28-001	Accessory box	1
3-19		Nut	2	31	13	Needle (1503V, 1503V-HD Type)	1
3-20		Screw	2			TVx5, 149x3, SY3651, UY3651	1
3-21		Spool pin bracket (2)	1			Needle (1501, 1502 Type) DVx43,	1
3-22		Thread guide bracket (2)	1			62x43, SY3516, UY3516	1
4	25-141	Machine mount bracket	2	32	28-464	T type wrench	1
5	23-324	Felt	4	33	23-121	Rubber A	4
6	80-751	Screw	4	34	23-122	Rubber B	4
7	75-451	Washer M8	4	35			4
8	75-529	Spring washer	4	36			4
9	88-176	Nut	4	37			4

## 20. Table stand installation diagram (テーブルスタンド据付図)



# 21. Index (索引)

Part No.	Q'ty	Page No.	Part No.	Q'ty	Page No.	Part No.	Q'ty	Page No.	Part No.	Q'ty	Page No.
11-501	1	12	17-515	1	12	21-701	1	2	31-305	1	5
-502	1	12	-515-2	2	12	-711	1	2	-306	1	5
-502	1	14	-516	1	14	22-556	1	2	-307	1	5
-504	1	16	-516-2	1	14	-558	1	16	-310	1	5
-504	1	18	-516-2	1	14	23-121	4	26	-314	2	5
-504	1	20	-517	1	14	-122	4	26	-314	5	5
-510	1	12	-522	1	21	-161	1	2	-341	2	5
-511	1	12	-526	1	22	-166	1	4	-341	2	5
-512	1	12	-532	1	24	-189	1	10	-364	1	5
-512	1	21	-532	1	23	-195	1	4	-401	1	5
-704	1	22	18-501	1	16	-195	1	6	-402	1	5
-704	1	24	-501	1	18	-197	1	6	-403	1	5
-704	1	23	-501	1	20	-197	1	4	-404	1	5
12-510	1	12	-520	1	12	-197	1	8	-405	1	5
-510	1	21	-521	1	12	-206	1	2	-406	1	5
-513	1	12	-522	1	21	-207	1	2	-407	1	5
-514	1	12	-523	1	12	-216	1	2	-409	1	5
-515	1	12	-524	1	12	-223	1	2	-410	1	6
-516	1	14	-525	1	14	-232	1	2	35-111	1	4
-517	1	14	-527	1	22	-260	1	6	-121	1	5
-527	1	22	-531	1	23	-260	2	2	-199	1	9
-553	1	23	-531	1	24	-263	1	2	-201	1	5
-553	1	24	19-305	1	9	-291	3	5	-203	2	5
13-		26	-314	1	9	-299	1	2	-207	1	5
14-051	1	2	-315	1	16	-300	1	5	-246	1	5
-052	1	18	-315	1	18	-301	1	2	-257	1	5
-055	1	16	-315	1	20	-302	2	2	-302	1	5
-501	1	18	-316	1	23	-306	4	5	-303	3	5
-502	1	20	-316	1	24	-324	4	26	-304	1	5
-506	1	16	-318	1	21	-324	4	3	-305	2	5
-510	1	12	-318	1	22	-324	2	16	-322	1	5
-511	1	12	-501	1	16	-324	2	18	39-102	1	5
-512	1	12	-501	1	18	-324	2	20	-104	4	26
-513	1	12	-502	1	20	-324	6	23	-107	1	6
-514	1	12	-510	1	12	-324	6	24	-108	1	2
-515	1	12	-511	1	12	-341	2	8	-122	1	4
-516	1	14	-512	1	12	-341	2	6	-133	1	5
-517	1	14	-513	1	12	-368	1	5	-137	1	5
-522	1	21	-514	1	12	-372	1	4	-161	1	2
-527	1	22	-515	1	12	-383	1	4	-162	1	5
-532	1	23	-516	1	14	-391	3	8	-163	2	2
-532	1	24	-517	1	14	-393	1	5	-213	1	2
15-501	1	18	-518	1	12	-393	1	8	-233	1	5
-502	1	20	-519	1	14	-402	1	2	-233	1	5
-506	1	16	-521	1	21	25-141	2	26			
-510	1	12	-522	1	21	26-709	2	25	41-101	4	3
-511	1	12	-528	1	22	-716	1	25	-101	2	16
-512	1	12	-529	1	22	-717	1	25	-101	2	18
-513	1	12	-531	1	23	-718	1	25	-101	2	20
-514	1	12	-531	1	24	-719	2	25	-101	6	23
-515	1	12	-535	1	23	-720	3	25	-101	6	24
-516	1	14	-535	1	24	-866	1	25	-105	4	3
-517	1	14	-536	1	23	-867	2	25	-105	2	16
-522	1	21	-536	1	24	-868	2	25	-105	2	18
-526	1	22				-869	2	25	-105	2	20
-532	1	23	21-122	1	2	-876	1	25	-105	6	23
-532	1	24	-131	1	2	-877	1	25	-105	6	24
17-501	1	18	-161	1	2	-878	1	25	-107	4	3
-502	1	20	-208	1	2	-879	1	25	-107	2	16
-506	1	16	-306	1	2	28-001	1	26	-107	2	18
-510	1	12	-316	1	2	-011	1	26	-107	2	20
-510-1	1	14	-335	1	16	-021	1	26	-107	6	23
-510-1	1	12	-402	1	2	-311	1	26	-107	6	24
-510-2	1	12	-513	1	2	-312	1	26	-111	8	3
-510-3	1	12	-522	1	2	-313	1	26	-111	12	23
-511	1	12	-523	1	14	-314	1	26	-111	12	24
-511-2	1	12	-527	1	16	-421	1	26	-111	4	16
-512	1	12	-528	1	18	-422	1	26	-111	4	18
-512-2	1	12	-531	1	2	-451	1	26	-111	4	20
-512-3	1	12				-452	1	26	-113	1	3
-512-3	1	14	-552	1	2	-464	1	26	-113	1	23
-513	1	12	-557	1	14	-611	1	26	-113	1	16
-513-2	1	12	-570	1	16				-113	1	18
-514	1	12	-570	1	18	31-161	4	26	-113	1	20
-514-2	1	12				-203	1	2	-113	1	24

# 21. Index (索引)

Part No.	Q'ty	Page No.	Part No.	Q'ty	Page No.	Part No.	Q'ty	Page No.	Part No.	Q'ty	Page No.
41-115	4	3	45-130	1	18	71-251	2	18	77-109	1	10
-115	6	23	-130	1	20	-322	1	9	-111	1	10
-115	2	16	-131	1	3	-431	2	8	-114	1	10
-115	2	18	-132	1	23	-432	1	8	-116	1	10
-115	2	20	-132	1	24	-432	2	6	-121	1	10
-115	6	24	-151	1	3	-454	1	9	-131	1	10
-117	4	3	-151	1	16	-482	1	5	-133	1	10
-117	6	23	-151	1	18	-531	1	8	-135	1	10
-117	2	16	-151	1	20	-542	1	10	-136	1	10
-117	2	18	-225	1	3	-561	1	9	-143	1	10
-117	2	20	47-101	1	3	-612	1	6	79-121	1	10
-117	6	24	-101	1	3	-642	1	8	-222	1	10
-121	1	3	-103	3	23	-753	1	8	-236	1	5
-121	1	18	-103	3	24	-851	1	20	-601	1	9
-121	1	20	-121	1	24	-851	1	21			
-121	1	16	-121	1	23				80-751	4	26
-123	1	23	-127	1	24	-851	1	22	81-110	1	4
-123	1	24	-127	1	23				-113	1	6
-131	6	23	-128	1	23	-851	1	24	-136	1	4
-131	2	16	-131	1	3	-854	1	16	-137	1	4
-131	6	24	-132	1	3	-854	1	18	-153	1	4
-131	2	18	-202	1	3	-857	1	6	-183	1	4
-131	2	20	-133	1	8	-901	1	9	-184	1	4
-131	4	3	-128	1	24	-933	1	6	-201	1	4
-132	1	23	51-013	1	8	73-113	1	6	-255	1	4
-132	1	16	-031	1	8	75-097	4	25	-401	1	9
-132	1	18	-036	1	8	-113	1	6	-412	1	6
-132	1	20	55-041	1	8	-114	1	8	-702	1	4
-132	1	24	-051	1	8	-132	2	8	-771	1	4
-172	6	23	-174	1	8	-139	1	9	-731	1	4
-172	1	16				-154	1	10	-736	2	4
-172	6	24	61-312	2	8	-243	1	8	-751	2	4
-172	1	20	-322	1	16	-326	1	9	84-112	1	18
-172	4	3	-322	1	16	-327	1	9	-112	1	20
-172	1	18	-322	1	18	-331	1	6	-112	1	16
-416	2	16	-322	1	18	-332	1	6	-113	1	14
-416	2	18	-322	1	20	-371	1	9	-113	1	12
-416	2	20	-322	1	20	-371	1	9	-161	1	3
-701	2	3	-322	1	21	-372	2	8	-161	2	4
-701	1	16	-322	1	21	-381	1	16	-161	1	5
-701	1	18	-322	1	22	-381	1	18	-161	2	24
-701	1	20	-322	1	22	-381	1	20	-162	2	3
-701	3	24	-322	2	24	-381	1	8	-163	1	16
-701	3	23	-512	1	6	-381	1	23	-163	1	3
-702	2	3	-713	1	6	-381	1	24	-163	2	3
-702	3	23	-722	1	6	-401	1	9	-163	1	23
-702	1	16	-823	2	9	-451	4	26	-163	2	23
-702	3	24	-823	1	9	-452	4	2	-164	1	9
-702	1	20	63-232	2	8	-452	1	9	-164	1	24
-702	1	18	-331	1	6	-453	1	2	-176	1	8
42-002	1	26	-351	1	8	-453	1	8	-177	1	8
-004	1	26	-511	1	6	-453	1	9	-311	3	23
-006	1	26	-721	1	6	-453	1	10	-311	3	24
-111	1	26	-812	1	9	-454	3	2	-361	2	2
-112	1	26	-821	1	9	-456	1	3	-361	1	3
-120	1	26	65-311	2	6	-456	1	3	-361	1	3
-122	1	26	-401	1	9	-456	1	16	-361	1	3
43-112	1	3	-902	1	9	-456	1	18	-361	1	3
-305	1	3	66-111	1	6	-456	1	20	-361	1	5
-331	1	3	67-132	1	9	-467	3	2	-361	1	9
-333	1	3	-222	1	9	-467	3	5	-361	1	16
-339	1	3	-311	1	8	-468	3	5	-361	1	18
45-100	1	18	69-105	1	6	-469	1	2	-361	1	20
-100	1	16	-121	1	6	-470	1	5	-361	4	25
-100	1	20	-141	1	6	-529	4	26	-362	3	2
-101	1	3	-208	1	6	77-001	1	26	-362	3	5
-103	1	23	-305	1	6	-002	2	26	-362	3	23
-103	1	24				-003	1	26	-362	4	10
-118	1	23	71-191	2	3	-004	1	26	-362	3	24
-118	1	24	-201	1	9	-005	1	26	-363	1	2
-120	1	16	-216	1	16	-006	1	26	-363	3	5
-120	1	18	-216	1	18	-007	1	26	-363	1	20
-120	1	20	-216	1	20	-101	1	10	-363	1	16
-121	1	3	-251	4	2	-103	1	10	-363	1	18
-130	1	16	-251	2	16	-107	1	10	-366	1	8



# 21. Index (索引)

Part No.	Q'ty	Page No.	Part No.	Q'ty	Page No.	Part No.	Q'ty	Page No.
84-366	1	8	84-588	1	8	86-501	1	9
-366	1	6	-591	1	6	-501	1	4
-366	1	6	-612	1	9	-502	1	9
-366	1	9	-612	2	8	-851	1	10
-368	1	12	-612	2	9	87-156	2	25
-368	1	14	-616	1	16	-161	2	25
-374	2	18	-616	1	18	-756	2	2
-374	2	20	-616	1	20	-810	1	2
-374	1	3	-616	2	23	-811	1	4
-374	1	3	-616	2	24	88-176	2	25
-374	2	16	-661	8	2	-176	4	26
-382	1	22	-661	4	8			
-382	2	24	-664	10	2	91-011	28	6
-382	1	18	-711	2	8	-271	1	8
-382	1	20	-711	2	22	-406	2	8
-382	1	21	-712	1	8	92-231	1	6
-382	2	23	-712	2	12	-231	1	9
-382	1	14	-712	2	21	93-201	2	9
-382	1	12	-712	2	14	-406	2	8
-383	1	8	-715	4	8	-611	2	10
-463	1	8	-716	1	9	-621	3	4
-464	2	3	-717	1	12			
-464	2	16	-717	1	14			
-464	2	16	-717	1	21			
-464	2	18	-718	2	6			
-464	2	20	-761	2	6			
-464	2	18	-761	2	9			
-511	2	8	-761	1	2			
-511	1	10	-761	3	2			
-512	2	10	-761	2	8			
-512	2	16	-761	3	16			
-521	1	24	-761	3	18			
-521	1	3	-761	1	10			
-521	1	2	-764	1	16			
-521	2	5	-764	1	18			
-521	2	9	-764	1	20			
-521	1	23	-764	1	23			
-521	10	25	-764	1	24			
-561	1	10	-766	1	9			
-561	1	10	-781	1	10			
-562	1	10	-812	1	10			
-563	1	10	-861	3	2			
-563	2	6	-862	2	2			
-566	6	2	85-113	6	6			
-566	6	2	-114	2	6			
-566	4	5	-114	2	6			
-566	3	6	-182	1	6			
-566	2	10	-211	1	9			
-566	3	25	-212	2	6			
-567	2	6	-531	1	3			
-568	2	6	-531	1	5			
-571	2	2	-531	1	16			
-571	2	2	-531	1	18			
-571	1	3	-531	1	20			
-571	2	3	-611	1	2			
-571	4	5	-611	1	16			
-571	2	8	-611	1	18			
-571	1	6	-624	1	8			
-571	1	16	-627	2	2			
-571	1	18	-628	2	2			
-571	1	20	-761	1	10			
-571	2	25	86-211	1	16			
-571	1	25	-314	1	9			
-572	3	5	-411	2	3			
-572	2	9	-411	5	23			
-572	2	9	-411	1	16			
-574	3	2	-411	1	18			
-574	1	8	-411	1	20			
-585	2	12	-411	5	24			
-575	2	14	-411	1	9			
-576	1	8	-411	1	9			
-576	1	8	-411	1	9			
-581	1	10	-412	1	9			
-585	3	2	-412	1	8			
-586	2	6	-501	1	8			



## 22. DLR-V series parts index (DLI)

Model 機種	Needle bar 針棒	Needle holder 針持	Needle plate 針板	Feed dog 送り歯	Presser foot 押え	Looper ルーバー			Looper holder ルーバー台	Needle guard 針受け	Upper cloth plate 上ベースカバー	Slide plate 鋸板	Looper thread guide チャンボン口 カバー糸道	Tension nipper holder 小チャンボン口 元板
1501M	11-504		14-501	15-501	17-501		19-501		19-315	18-501	21-570	21-528		
1501MF	11-504		14-506	15-506	17-506		19-501		19-315	18-501	21-570	21-527		
1501HD	11-504		14-502	15-502	17-502		19-501		19-315	18-501	21-552	21-522		
1502T 1/32"	11-704	12-527	14-527	15-526	17-526	19-528(front)		19-529(rear)	19-318	18-527	21-552	21-522	47-101	
1502V-HD 1/4"	11-512	12-510	14-522	15-522	17-522	19-521(front)		19-522(rear)	19-318	18-522	21-552	21-522	47-101	
1502L 1/8"	11-510	12-510	14-510	15-510	17-510	19-510(front)		19-518(rear)	19-314	18-520	21-551	21-522	47-101	
1502L 3/16"	11-511	12-510	14-511	15-511	17-511	19-511(front)		19-518(rear)	19-314	18-520	21-551	21-522	47-101	
1502L 1/4"	11-512	12-510	14-512	15-512	17-512	19-512(front)		19-518(rear)	19-314	18-521	21-551	21-522	47-101	
1502L 5/16"	11-501	12-513	14-513	15-513	17-513	19-513(front)		19-518(rear)	19-314	18-521	21-551	21-522	47-101	
1502L 3/8"	11-502	12-514	14-514	15-514	17-514	19-514(front)		19-518(rear)	19-314	18-523	21-551	21-522	47-101	
1502L 1/2"	11-502	12-515	14-515	15-515	17-515	19-515(front)		19-518(rear)	19-314	18-524	21-551	21-522	47-101	
1502L 5/8"	11-502	12-516	14-516	15-516	17-516	19-516(front)		19-519(rear)	19-314	18-525	21-553	21-523	47-101	
1502L 3/4"	11-502	12-517	14-517	15-517	17-517	19-517(front)		19-519(rear)	19-314	18-525	21-553	21-523	47-101	
1502V 1/8"	11-510	12-510	14-510	15-510	17-510	19-510(front)		19-518(rear)	19-314	18-520	21-551	21-522	47-101	
1502V 3/16"	11-511	12-510	14-511	15-511	17-511	19-511(front)		19-518(rear)	19-314	18-520	21-551	21-522	47-101	
1502V 1/4"	11-512	12-510	14-512	15-512	17-512	19-512(front)		19-518(rear)	19-314	18-521	21-551	21-522	47-101	
1502V 5/16"	11-501	12-513	14-513	15-513	17-513	19-513(front)		19-518(rear)	19-314	18-521	21-551	21-522	47-101	
1502V 3/8"	11-502	12-514	14-514	15-514	17-514	19-514(front)		19-518(rear)	19-314	18-523	21-551	21-522	47-101	
1502V 1/2"	11-502	12-515	14-515	15-515	17-515	19-515(front)		19-518(rear)	19-314	18-524	21-551	21-522	47-101	
1502V 5/8"	11-502	12-516	14-516	17-516	17-516	19-516(front)		19-519(rear)	19-314	18-525	21-553	21-523	47-101	
1502V 3/4"	11-502	12-517	14-517	15-517	17-517	19-517(front)		19-519(rear)	19-314	18-525	21-553	21-523	47-101	
1503V 1/4"	11-704	12-553	14-532	15-532	17-532	19-531(front)	19-535(middle)	19-536(rear)	19-316	18-531	21-551	21-522	47-103	
1503V-HD 1/4"	11-704	12-553	14-532	15-532	17-532	19-531(front)	19-535(middle)	19-536(rear)	19-316	18-531	21-551	21-522	47-103	



1500シリーズパーツ一覧表

Model 機種	Needle thread eyelet 針板目	Needle lever thread eyelet 針板目	Needle bar thread eyelet 針棒目	Needle thread guide 針板ガイド	Needle plate support 針板土台	Needle bar connection 針棒連結	Crank shaft クランクシャフト	Feed rocker 送り土台	Feed eccentric 送りエキセン	Looper avoid eccentric 針返しエキセン	Looper driving lever ルーバー振り元レバー	Cast-off support plate a'ssy 下糸附きセット	Thread tension a'ssy チャンパンセット	Arm bed アームベッド
1501M	4 x 100	16 x 10	45 x 130	1 x 1 x 1	14-052	73-113	71 BJA(5M)	55-174	61-322(0.9mm)	61-322(0.9mm)	67-222	40-352	40-111	22-556
1501MF	16 x 100	4 x 120	45 x 170	45 x 161	14-055	73-113	71 B54(5M)	55-174	61-322(0.9mm)	61-322(0.9mm)	67-222	40-352	40-111	22-556
1501HD	45 x 100	4 x 120	45 x 10	45 x 161	14-051	73-113	71 B51(5H)	55-174	61-322(0.9mm)	61-322(0.9mm)	67-222	40-352	40-111	22-556
1502T 1/32"	45 x 101	45 x 121	45 x 11	45 x 161	14-051	73-113	71 B51(5H)	55-174	61-322(0.9mm)	61-322(0.9mm)	67-222	40-352	40-122	22-556
1502V-HD 1/4"	45 x 101	45 x 121	45 x 11	45 x 161	14-051	73-113	71 B51(5H)	55-174	61-322(0.9mm)	61-322(0.9mm)	67-222	40-352	40-122	22-556
1502L 1/8"	45 x 101	45 x 121	45 x 11	45 x 161	14-051	73-113	71 B57(5L)	55-174	61-312(0.8mm)	61-312(0.8mm)	67-222	40-352	40-122	22-556
1502L 3/16"	45 x 101	45 x 121	45 x 131	45 x 161	14-051	73-113	71 B57(5L)	55-174	61-312(0.8mm)	61-312(0.8mm)	67-222	40-352	40-122	22-556
1502L 1/4"	45 x 101	45 x 121	45 x 131	45 x 161	14-051	73-113	71 B57(L)	55-174	61-312(0.8mm)	61-312(0.8mm)	67-222	40-352	40-122	22-556
1502L 5/16"	45 x 101	45 x 121	45 x 111	45 x 161	14-051	73-113	71 B57(5L)	55-174	61-312(0.8mm)	61-312(0.8mm)	67-222	40-352	40-122	22-556
1502L 3/8"	45 x 101	45 x 121	45 x 131	45 x 161	14-051	73-113	71 B57(L)	55-174	61-312(0.8mm)	61-312(0.8mm)	67-222	40-352	40-122	22-556
1502L 1/2"	45 x 101	45 x 121	45 x 131	45 x 161	14-051	73-113	71 B57(5L)	55-174	61-312(0.8mm)	61-312(0.8mm)	67-222	40-352	40-122	22-556
1502L 5/8"	45 x 101	45 x 121	45 x 131	45 x 161	14-051	73-113	71 B57(5L)	55-174	61-312(0.8mm)	61-312(0.8mm)	67-222	40-352	40-122	22-556
1502L 3/4"	45 x 101	45 x 121	45 x 131	45 x 161	14-051	73-113	71 B57(5L)	55-174	61-312(0.8mm)	61-312(0.8mm)	67-222	40-352	40-122	22-556
1502V 1/8"	45 x 101	45 x 121	45 x 131	45 x 161	14-051	73-113	71 B57(5L)	55-174	61-312(0.8mm)	61-312(0.8mm)	67-222	40-352	40-122	22-556
1502V 3/16"	45 x 101	45 x 121	45 x 131	45 x 161	14-051	73-113	71 B57(5L)	55-174	61-312(0.8mm)	61-312(0.8mm)	67-222	40-352	40-122	22-556
1502V 1/4"	45 x 101	45 x 121	45 x 131	45 x 161	14-051	73-113	71 B57(5L)	55-174	61-312(0.8mm)	61-312(0.8mm)	67-222	40-352	40-122	22-556
1502V 5/16"	45 x 101	45 x 121	45 x 131	45 x 161	14-051	73-113	71 B57(5L)	55-174	61-312(0.8mm)	61-312(0.8mm)	67-222	40-352	40-122	22-556
1502V 3/8"	45 x 101	45 x 121	45 x 131	45 x 161	14-051	73-113	71-B57(5L)	55-174	61-312(0.8mm)	61-312(0.8mm)	67-222	40-352	40-122	22-556
1502V 1/2"	45 x 101	45 x 121	45 x 131	45 x 161	14-051	73-113	71-B57(5L)	55-174	61-312(0.8mm)	61-312(0.8mm)	67-222	40-352	40-122	22-556
1502V 5/8"	45 x 101	45 x 121	45 x 131	45 x 161	14-054	73-113	71 B57(5L)	55-174	61-312(0.8mm)	61-312(0.8mm)	67-222	40-352	40-122	22-556
1502V 3/4"	45 x 101	45 x 121	45 x 131	45 x 161	14-054	73-113	71-B57(5L)	55-174	61-312(0.8mm)	61-312(0.8mm)	67-222	40-352	40-122	22-556
1503V 1/4"	45 x 102	45 x 122	45 x 133	45 x 152	14-054	73-113	71 B57(5L)	55-174	61-312(0.8mm)	61-312(0.8mm)	67-222	40-354	40-133	22-556
1503V-HD 1/4"	45 x 102	45 x 122	45 x 133	45 x 152	14-054	73-113	71 B51(5H)	55-174	61-322(0.9mm)	61-322(0.9mm)	67-222	40-354	40-133	22-556





## **MORIMOTO MFG. CO., LTD.**

Megalo Coop Fukushima Bldg. (2F),  
10-19, Fukushima 2-Chome, Fukushima-ku,  
Osaka 553, Japan  
Tel: (06) 451-9127    Telex: 05242193 KSPCAL-J

### **MAIN FACTORY**

180, Suna Shijonawate City, Osaka 575, Japan  
Tel: (0720) 78-1177

### **MORIMOTO MFG. (S) CO. PTE. LTD.**

18A-23A Block 12, 50 Kallang Bahru,  
Kallang Basin Industrial Estate Singapore 12  
Tel: 2938856, 2938880    Telex: RS25138 A/B: MMSPL

### **MORIMOTO MFG. (H.K.) LTD.**

C-22 22nd Floor, Pearl City Mansion. Paterson Steet, Hong Kong  
Tel: 5-771631    Telex: 83919 (MOR H.K)